



WORLD CLASS DIGITAL X-RAY SYSTEMS

PRODUCT PRESENTATION

Arcoma Precision

CONTENT

- About Arcoma
- Arcoma Precision
- The detectors
- The accessories

ABOUT ARCOMA

Arcoma develops, produces and provides complete radiology solutions worldwide with the mission to improve care for the patient and the work environment for the user.



Arcoma offers product solutions covering key clinical applications in the radiology area.

**GENERAL
CLINIC**

**MUSCLE/
SKELETON
CLINIC**

**THORACIC
CLINIC**

**PEDIATRIC
CLINIC**

**TRAUMA/
RESUS CLINIC**

OUR PRODUCTS ENABLE

**SUPERIOR
WORKFLOW**

**UNIQUE
RELIABILITY**

**EXCELLENT
DIAGNOSTIC
RESULTS**



ARCOMA
PRECISION

ARCOMA PRECISION

PREMIUM DIGITAL X-RAY SYSTEM

Arcoma Precision is a premium digital x-ray system that provides high image quality, clinical flexibility and superior workflow for a wide range of radiographic applications.

Its ergonomic design and sophisticated auto positioning technology help you maximize patient throughput.



Safe investment

Low dose

Excellent imaging result

Flexible detector configurations

Superior workflow

Superior ergonomics



ARCOMA PRECISION

PREMIUM DIGITAL X-RAY SYSTEM

SUPERIOR WORKFLOW

EASY-TO-USE INTERFACE

Easy-to-use interface with preview image shown in approximately / ~ 1 second *1).

MOTORIZED WALL STAND

Upward and downward easy positioning from the control panel or using the foot control (optional).

AUTOMATIC DETECTOR TRACKING

The tube automatically tracks the position of the detector so that the user can focus on the patient.

AUTO POSITIONING

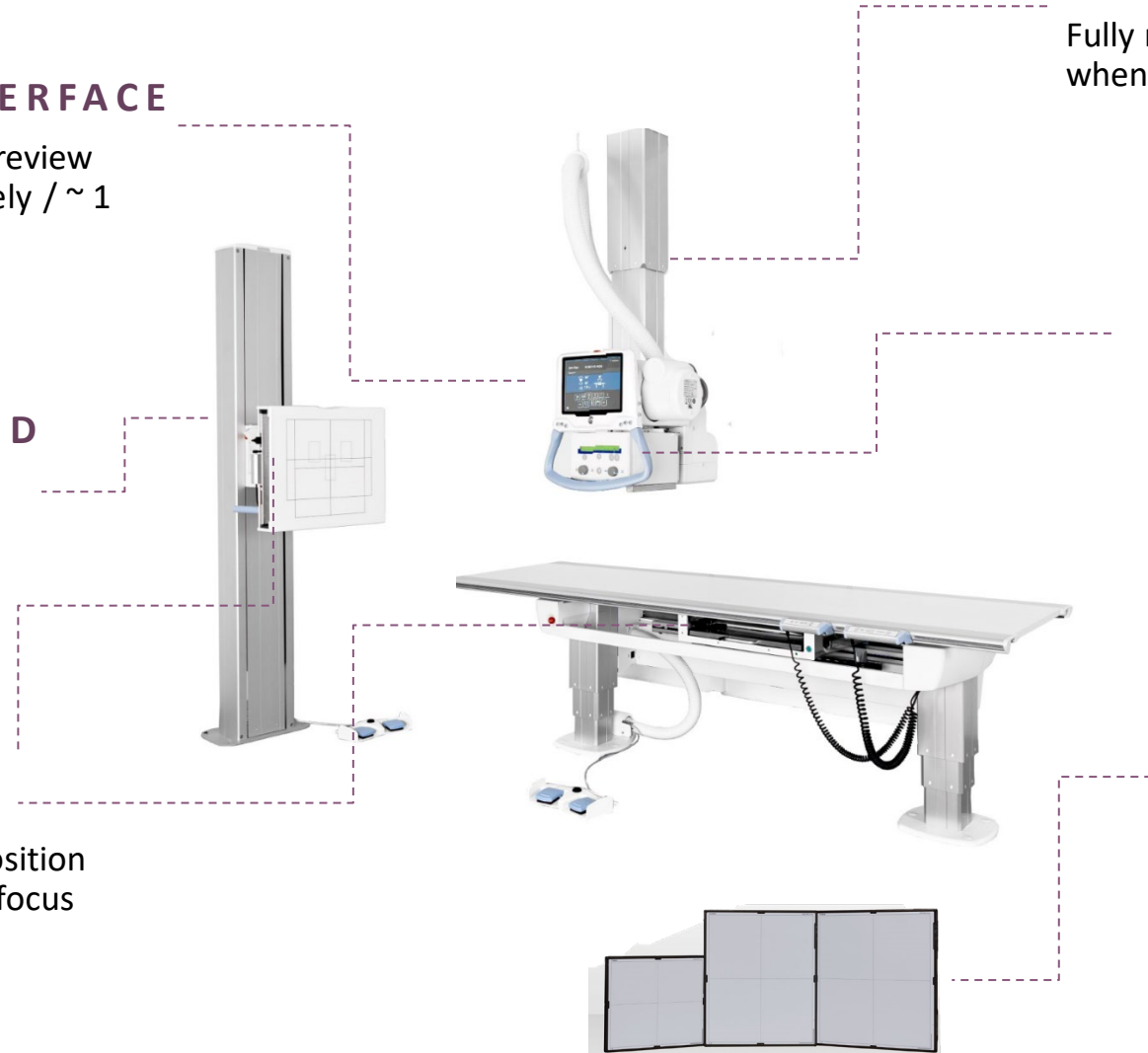
Fully motorized auto-positioning when anatomical protocol selected.

EXCELLENT FINE-TUNING

Fine tuning into the right position is done manually, with minimal force needed.

WIRELESS DETECTORS

Ultralight, flexible and wireless detectors.



*1) Depending on acquisition mode

SAFE INVESTMENT

Arcoma Precision is designed for the productivity and versatility needs of high-volume hospital imaging departments.

Its robust construction and high quality helps ensure reliable operation, minimal service and a long product lifespan, all of which lowers the lifetime cost.

A photograph of the Arcoma Precision mobile C-arm control console in a clinical setting. The console is white with blue accents and features a large touchscreen display. The screen shows patient information: 'Jane Doe ID 987-65-4320' and 'Hand AP'. Below the patient info, there are two diagrams of a hand in different positions with associated numerical values: '80°' and '60°', and '110 cm'. At the bottom of the screen, there are several control buttons with icons for '50', '250', '20', '8', '+1', and '5'. Below the screen, there are physical buttons and a small horizontal display. The console is mounted on a white mobile cart with a grey carpeted floor in the background.

Reliable operation

Minimal service needs

Long product lifespan

Low lifetime cost

LOW DOSE

Arcoma Precision provides high quality imaging with low dose for maximum patient safety. Software simulated grid is available as an option. It can be used for patients of all sizes and lower the dose by up to **60%**.

Components that contribute to dose reduction

Arcoma continuously works to create a lower radiation dose in our solutions. Examples of components in the Arcoma Precision system that contribute to dose reduction:

- CANON DETECTORS WITH HIGH DQE
- SOFTWARE SIMULATED GRID*
- AUTOMATIC EXPOSURE CONTROL



* Scatter correction software (option)

Components that contribute to low dose

Arcoma continuously works to create a lower radiation dose in our solutions. The following components in the Arcoma Precision system contribute to dose reduction:

CANON DETECTORS WITH HIGH DQE

The Canon detectors have high DQE (detective quantum efficiency), which provides a more efficient use of radiation, (i.e. low dosage) and high quality images.

SOFTWARE SIMULATED GRID

Dose can be reduced by up to 60% using a virtual grid (optional scatter correction software) for bedside examinations, rather than a physical grid.

DOSE MONITORING

The system is equipped with a Dose Area Meter (optional) that will measure and transfer the patient dose.

AUTOMATIC EXPOSURE CONTROL

Automatic exposure control automatically sets the exposure parameters for a specific patient and ensures good image quality with minimal dose.

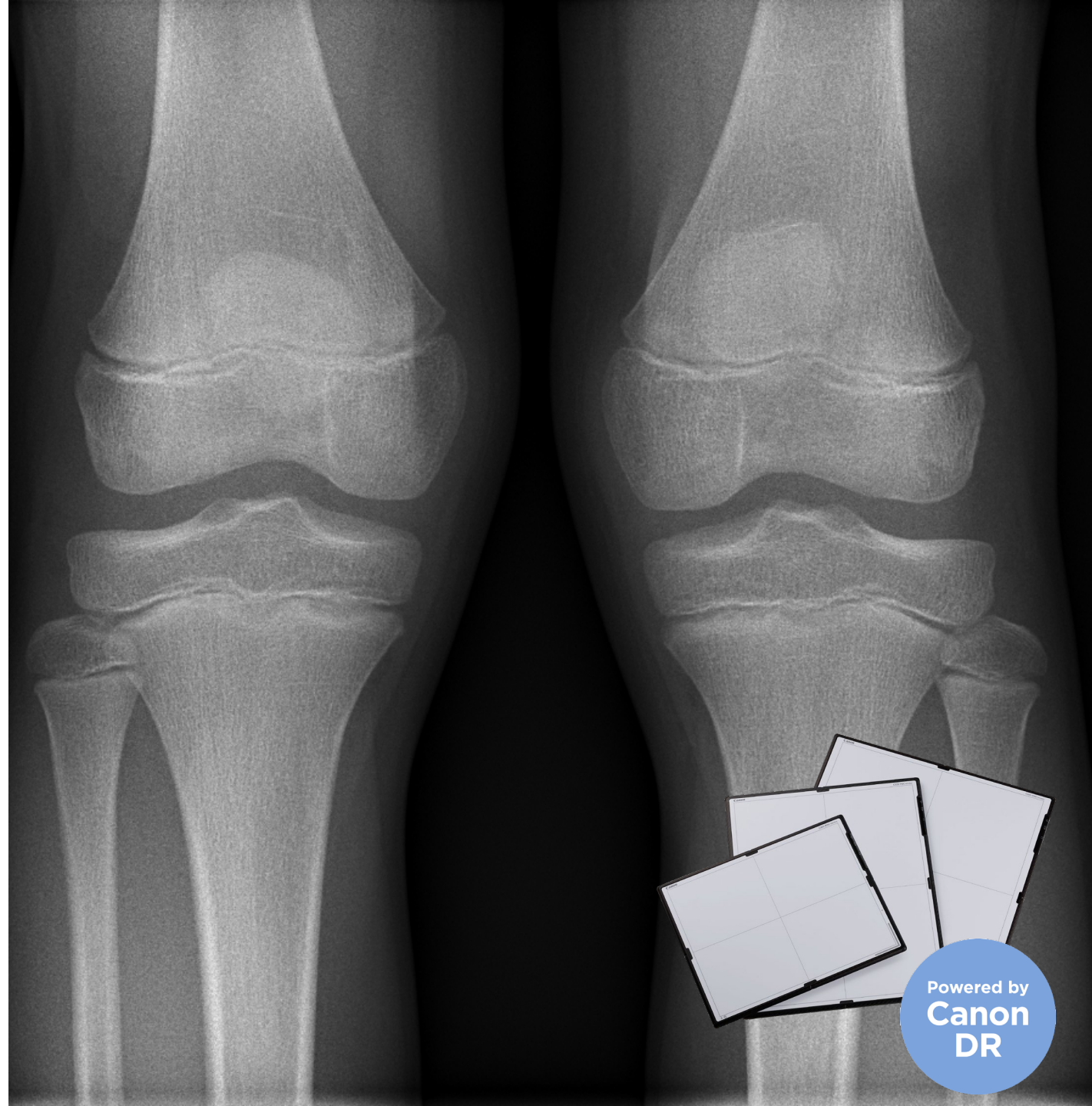
PREDEFINED PROTOCOLS

Predefined protocols for different patient sizes can easily be selected from the tube display to adapt the dose accordingly.

EXCELLENT IMAGING RESULT

Precision is powered by Canon's next generation wireless CXDI detectors and imaging software.

Canon's CXDI-NE software provides a GUI* that is always right for you. Comprehensive image processing, including software simulated grid, guarantees optimal image quality and minimal dose.



Powered by
**Canon
DR**

* GUI = graphical user interface

FLEXIBLE DETECTOR CONFIGURATIONS

The ultra lightweight, waterproof detectors (IP 57) with integrated battery and image storage can be used on board or stand-alone.

Up to 4 detectors can be used with Precision to provide optimal positioning and imaging flexibility. The detectors can also be:

- shared between x-ray rooms
- used for mobile X-ray solutions
- used in the holder or wireless



SUPERIOR ERGONOMICS

Patient centric care is Arcoma's approach to everything we design. Our focus is to provide an environment that minimizes stress on staff and maximizes comfort for the patient.

Arcoma Precision's motorized and automatic movements, together with the lightweight OTC and flexible table design, make it an ideal ergonomic solution for both patient and operator.

Motorized movements, smooth and silent

Lightweight OTC, easy fine-tuning

Motorized table, ergonomic working height





THE DETECTORS

- A DEEPER LOOK

CANON DETECTORS

Arcoma Precision is powered by detectors from Canon.

With more than 100 years of experience within medical imaging Canon delivers the most advanced detector solutions on the market.



THE DETECTORS



CXDI-410C W

- Wireless
- 2,8 kg
- Size: 42,6 x 41,5 cm
- Effective image area: 426x 415mm
- Image matrix size: 3320 x 3408 mm



CXDI-710C W

- Wireless
- 2,3 kg
- Size: 35.0x42.6 cm
- Effective image area: 350 x 426 mm
- Image matrix size: 2800 x 3408pixels



CXDI-810C W

- Wireless
- 1,8 kg
- Size: 35.0x27.4 cm
- Effective image area: 350 x 274 mm
- Image matrix size: 2800 x 2192 mm



CXDI-401C Compact

- Fixed
- Size: Approx. 46.0 (W) x 49.0 (H) x 15 (D) cm
- Effective image area: 415x426 mm
- Image matrix size: 3320x 3408 pixels

DETECTOR BENEFITS

NONSTOP USE WITH DURABLE DESIGN

Strong and durable design as well as IPX7 waterproof ensures nonstop use.

LIGHTWEIGHT AND ERGONOMIC

Ultralight easy to use detectors supports increased workflow and ergonomic for the user.

PERFECT IMAGE QUALITY

High resolution, high sensitivity and high signal to noise performance ensures perfect image quality without increasing dose.



DETECTOR - FEATURES

FEATURES

- Load capacity of 310 kg
- Waterproof - IPX7 compliant
- On-board image storage – up to 99 images
- Multi-function docking station
- Super-lightweight design – the lightest 1,8 kg
- Handgrips for easy transfer
- Colour coding
- Preview image time: 1 seconds
- Cycle time: 7 seconds

IPX7 compliant
(can be fully immersed in water)

Powered by
Canon
DR

DETECTOR INTEGRATION WITH FULL FLEXIBILITY

The wall stand and the table can hold either the CXI-710C W, CXDI-401C W or the CXDI-401C Compact.

Wireless image transfer for the CXDI-710C W and CXDI-410C W.

Automatic charging of battery when the detectors are placed in the detector holders.



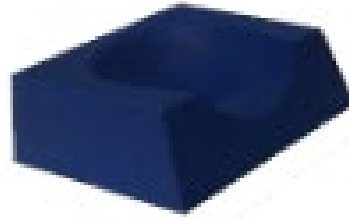
Detector	Wall stand	Table	Free	Details:
CXDI-410C	yes	yes	Yes	Wireless 42,6 x 1,5 cm 2,8 kg
	<ul style="list-style-type: none"> Status indicator Charging in holder 	<ul style="list-style-type: none"> Status indicator Charging in holder 		
CXDI-710C	yes	yes	Yes	Wireless 35,0 x 42,6 cm 2,3 kg
	<ul style="list-style-type: none"> Status indicator Charging in holder 	<ul style="list-style-type: none"> Status indicator Charging in holder 		
CXDI-810C	Not applicable	Not applicable	yes	Wireless 35,0 x 27,4 cm 1,8 kg
CXDI-401C Compact	yes	yes	Not applicable	Fix 46 x 49 cm
Other options:	Left/Right hand loading of grid & Wireless detector	Not applicable	Not applicable	



ACCESSORIES

ACCESSORIES

We offer a wide range of accessories to fit the needs of our customers.



THANK YOU

Arcoma AB | Annavägen 1 | 352 46 Växjö | Sweden



PHONE

+46 470 70 69 00



EMAIL

office@arcoma.se



WEBSITE

www.arcoma.se