



WORLD CLASS DIGITAL X-RAY SYSTEMS

PRODUCT PRESENTATION

Arcoma Precision i5

CONTENT

Arcoma Intuition

- Arcoma Precision i5
- Stitching
- Resus room application



Arcoma Precision i5

ARCOMA PRECISION i5

PREMIUM DIGITAL X-RAY SYSTEM

Arcoma Precision i5 is a new premium digital X-ray system that provides high quality images, clinical flexibility and superior workflow.

This is one of the most reliable products on the market, designed and built in Sweden according to the highest quality standards.

The workflow is excellent thanks to state-of-the-art ergonomics and supporting features such as auto positioning, wall stand with motorized tilt and automatic detector tracking.

The manual fine-tuning of the overhead tube crane is unique and can be made with minimal force. Also the ultralight and flexible Canon detectors ensures excellent imaging result at all times with minimal dose.



Powered by
Canon
DR

Low dose

Flexible
detector
configurations

Safe
investment

Excellent
imaging
result

Superior
workflow

Superior
ergonomics

ARCOMA PRECISION i5

PREMIUM DIGITAL X-RAY SYSTEM



THE PRECISION i5 X-RAY SYSTEM

MODERN AND EASY TO USE OTC

EXCELLENT DESIGN

Modern Scandinavian design that blends in nicely into any hospital environment.

EASY DISINFECTION

Easy cleaning and disinfection thanks to glass overlay display with no edges.

SMART AND EASY TO USE

Good viewing angle of display and few buttons makes the OTC user-friendly and easy to understand.



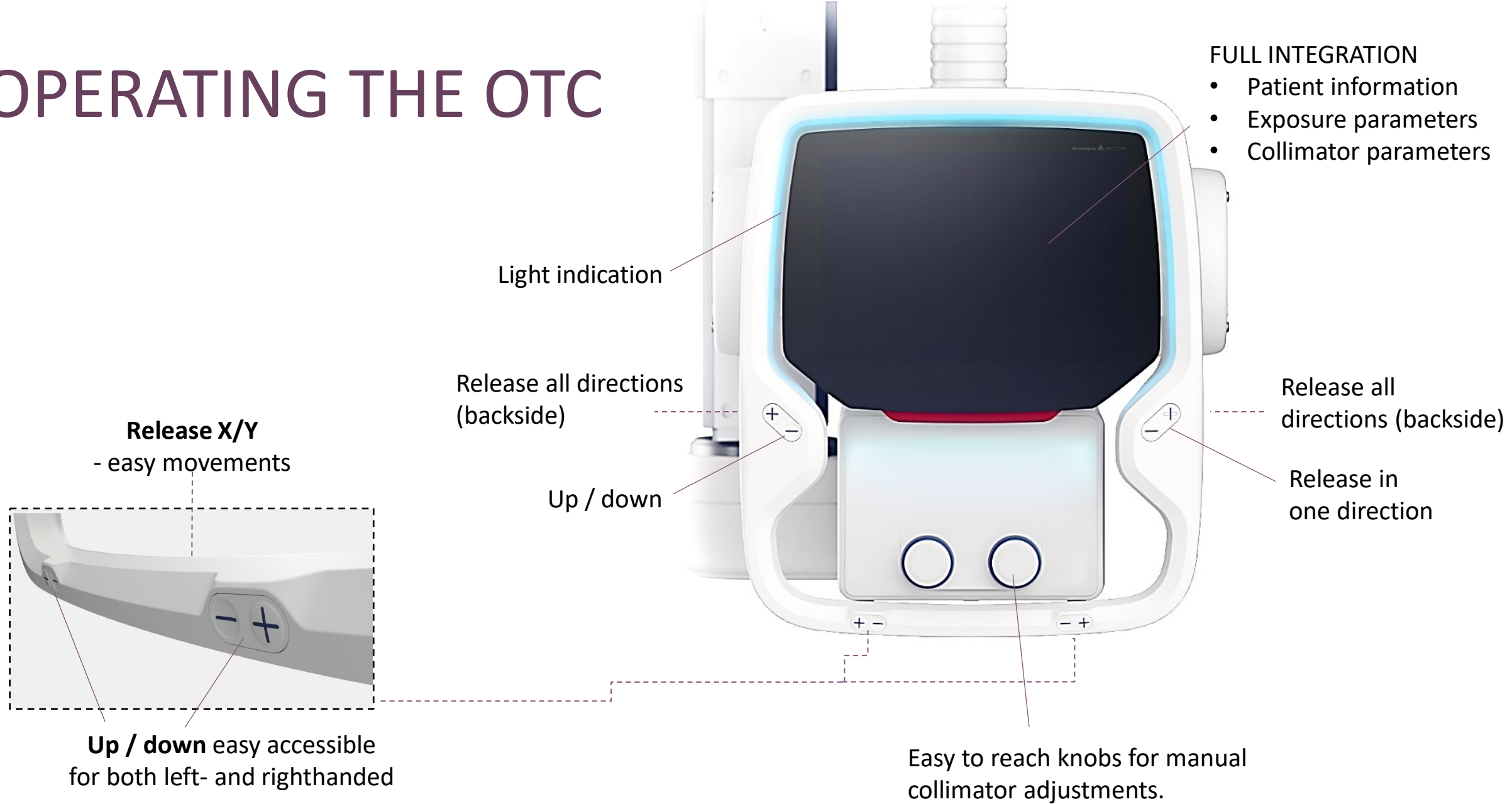
OTC - FEATURES

FEATURES

- One of the lightest OTC on the market
- Modern user interface
- All functions and data in one single workspot
- Easy to access buttons
- Integrated light indication
- All directions movement
- Adapted for left- and righthanded
- Flexible user interface



OPERATING THE OTC



WALL STAND WITH MOTORIZED TILT

OPTIMIZED WORKFLOW

Motorized movements enables efficient examinations

ERGONOMIC DESIGN

Motorized tiltable wall stand allows minimal manual handling.

FULL FOCUS ON THE PATIENT

Easy adjustment and motorized tilt enables increased focus on the patient.

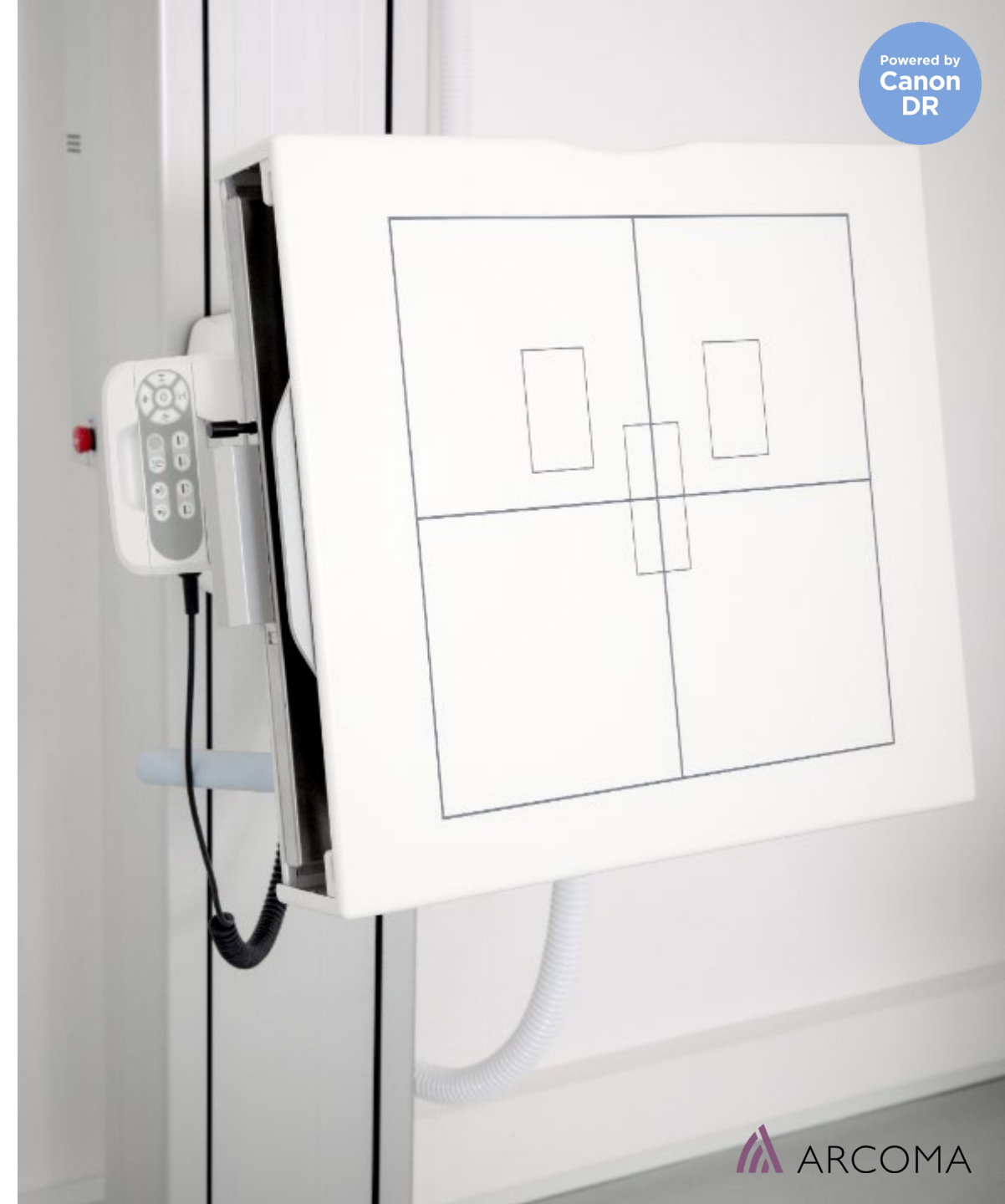


Powered by
Canon
DR

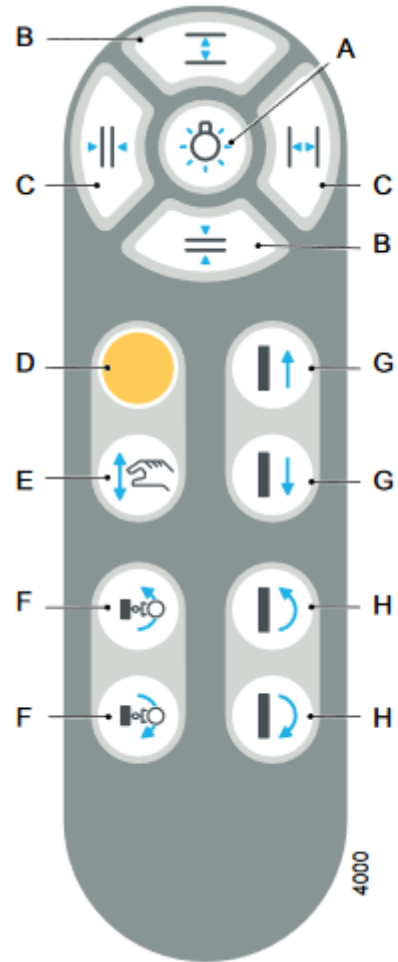
WALL STAND - FEATURES

FEATURES

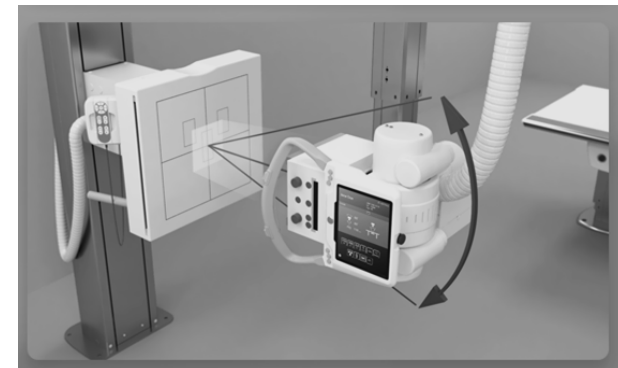
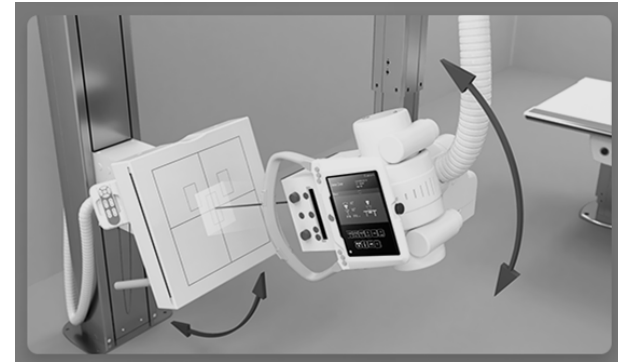
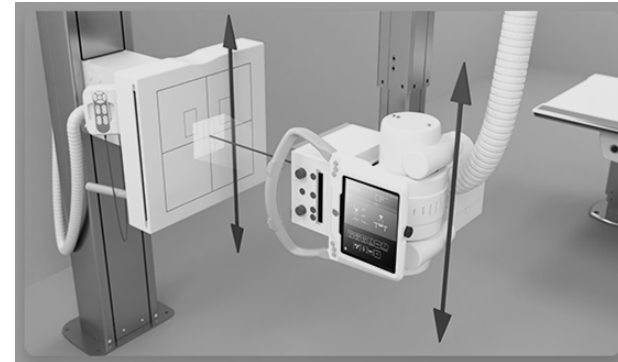
- Motorized tilt of the detector
- Motorized and manual vertical movements
- Auto tracking (vertical, tilting and pendulum mode)
- Hand control for operating wall stand, collimator and auto positioning
- Wireless foot controls
- Removable lateral arm rest with parking position and adjustable angle
- Extended range of vertical movement (Highest and lowest detector position on the market)



OPERATING THE WALL STAND



- A. Collimator light on/off
- B. Adjustment height collimation
- C. Adjustment width collimation
- D. Servo button
- E. Break release for manual movement of detector
- F. Pendulum mode wall stand
- G. Detector up/down, Motorized
- H. Detector tilt and OTC tracking, -20 to 90°



HIGH CAPACITY EXAMINATION TABLE

SMOOTH AND SILENT

Silent and smooth movements thanks to power supplies without fans.

CAPACITY FOR LARGER PATIENTS

Large table top possibility. Patient weight capacity with extension up to 300kg/660lbs.

OPTIMIZED DISINFECTION

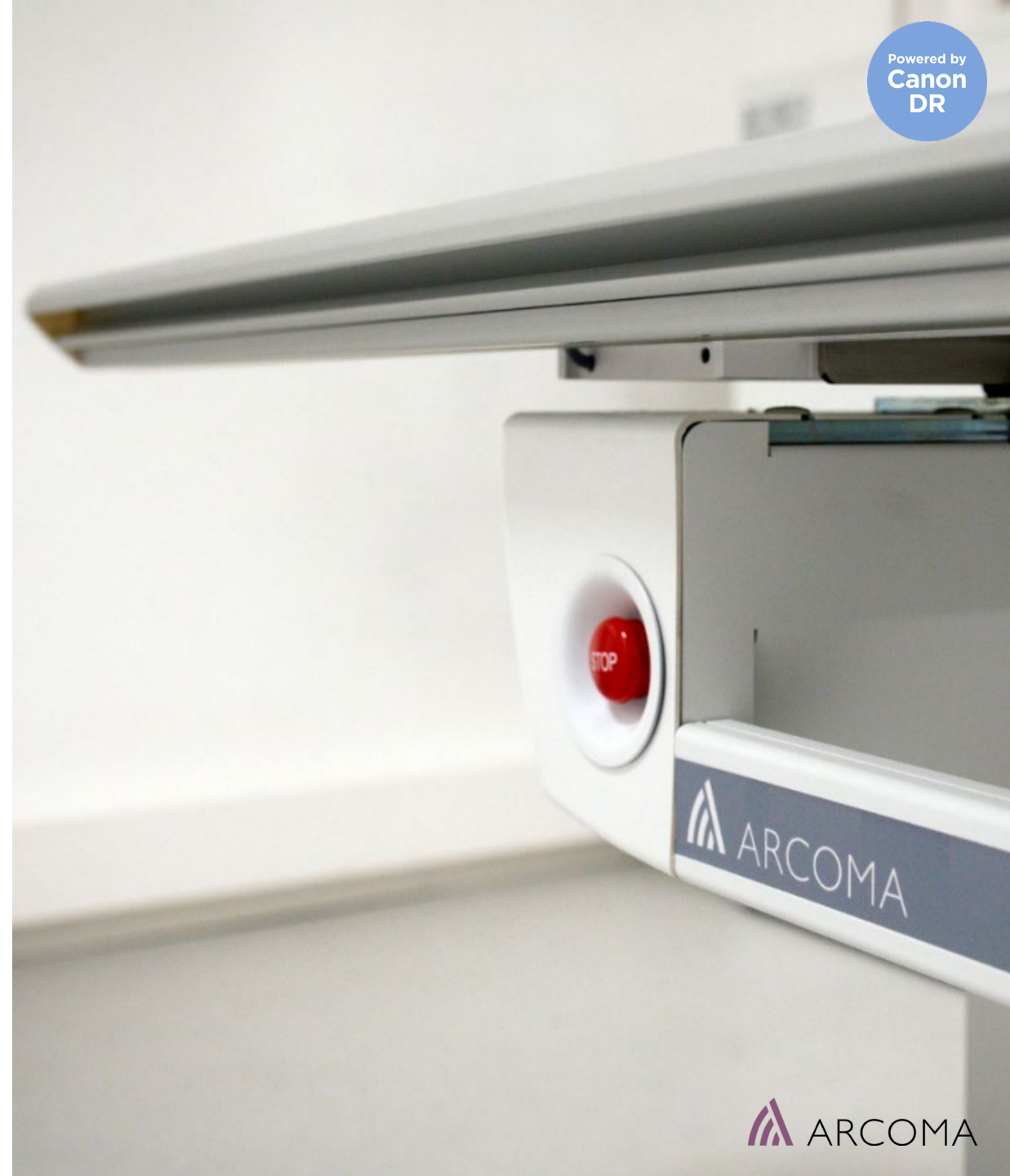
Open table design that optimizes patient access and infection disease control.

Powered by
Canon
DR

TABLE - FEATURES

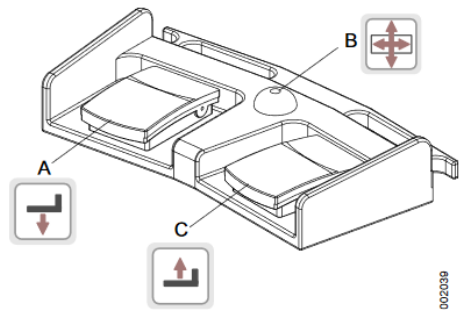
FEATURES

- Wired and Wireless foot controls (options)
- Weight capacity of 300 kg/660 lbs (dynamic)
- Large table top with long table stroke
- X-ray from skull to toe without moving the patient
- OTC automatic tracking table detector
- Low position for easy access



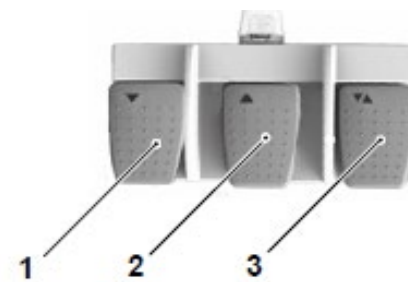
OPERATING THE TABLE

Wired foot control



- A. Z movement down
- B. Unlock table top brakes (X/Y)
- C. Z movement up

Wireless foot control



- 1. Z movement down
- 2. Z movement up
- 3. Release pedal:
 - Unlocks wallstand detector brake. Manual movement is possible.
 - Unlocks table top. Manual movement is possible, table top is floating.

Table hand grip rail

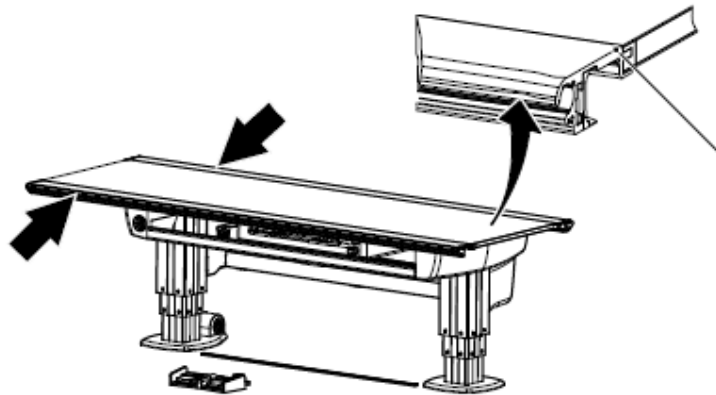
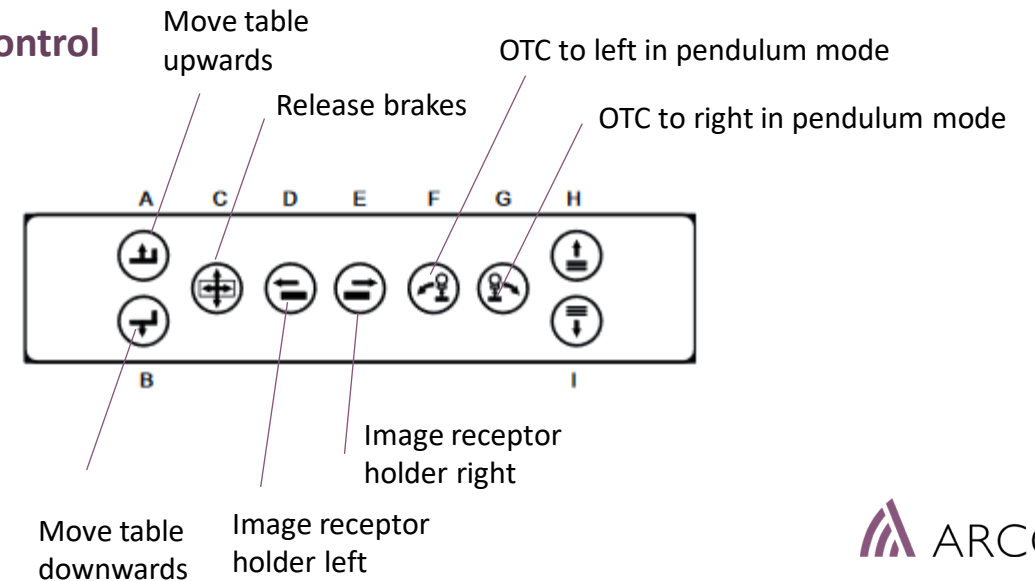


Table hand control





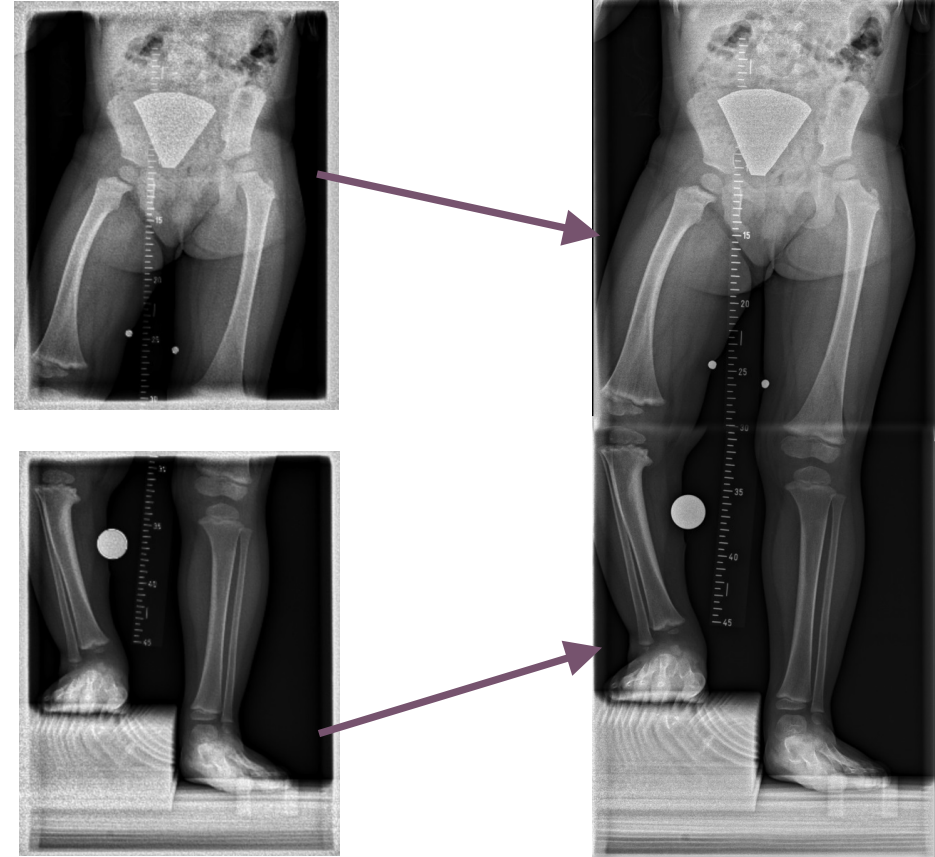
STITCHING

- ARCOMA PRECISION i5

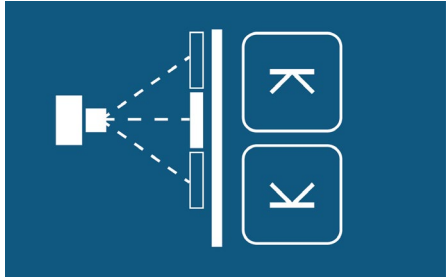
STITCHING

In simple terms, stitching refers to a technique used after the x-rays have been taken, in which multiple x-ray images of a body part are used to create one single, high resolution image. The process of putting them together is referred to as stitching.

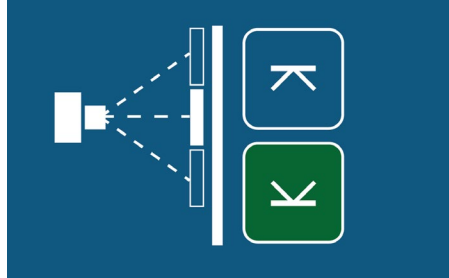
By having consecutive images merged together to create an overview, a more comprehensive evaluation of the spine is possible.



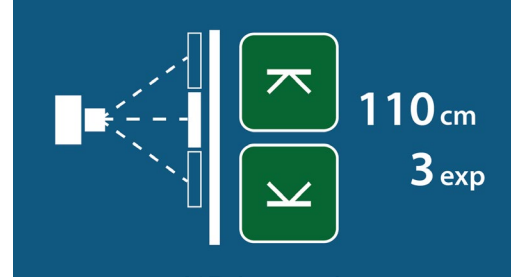
STITCHING STEP-BY-STEP



1 Collimate to the lower border and select the lower arrow key (turns green).



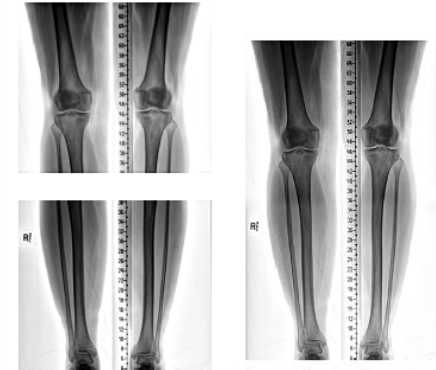
2 Collimate to the upper border and press the upper arrow key (turns green).



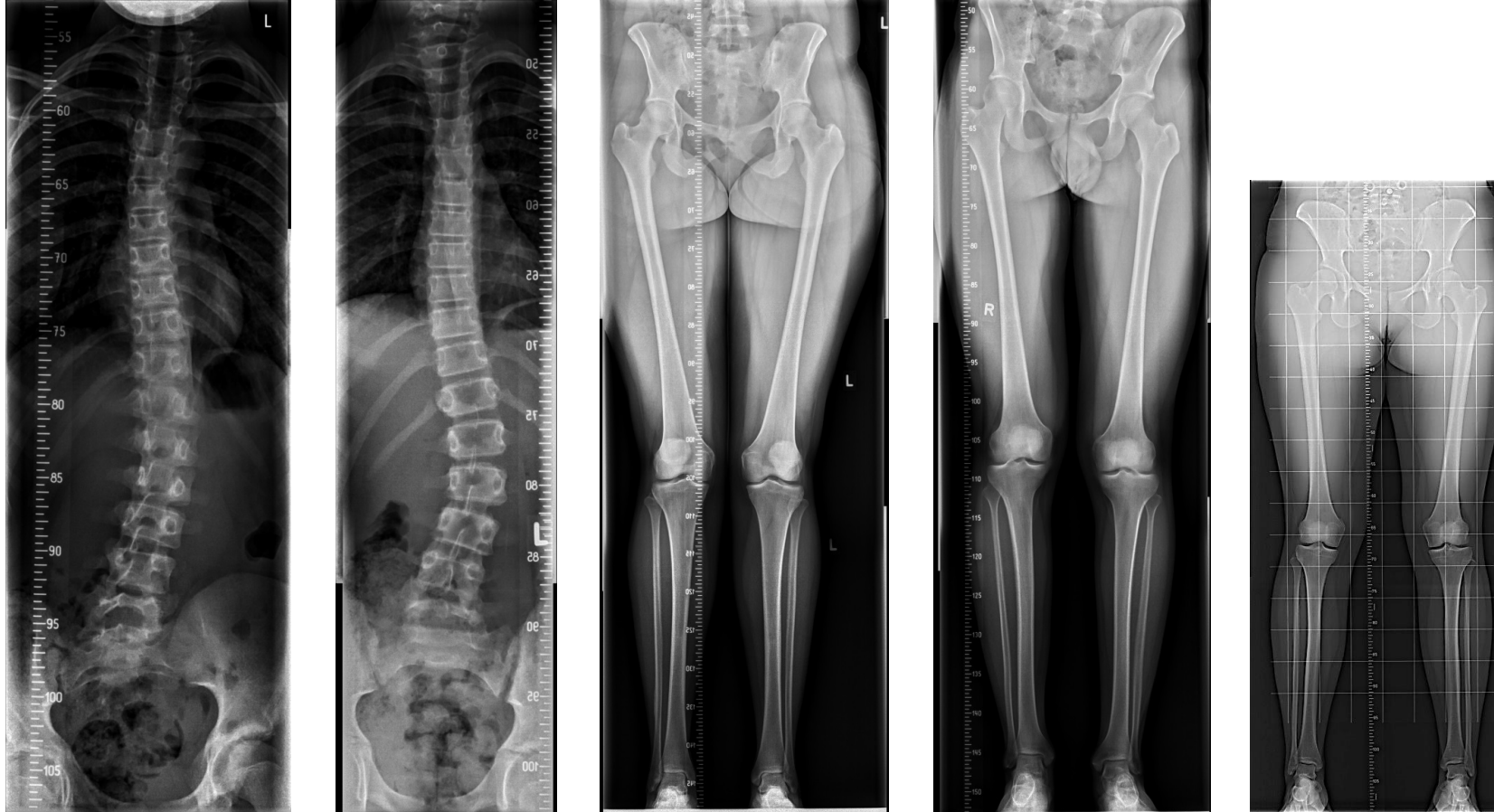
3 Length of image and number of images is displayed.



4 Press exposure button. Tube will rotate and detector will move automatically.



STITCHING



Individual APR Exposures stored e.g. Hip, Knee, Ankle

All individual images + stitched are sent to PACS in DICOM format

STITCHING FRAME

The stitching frame provides additional patient support in the standing position for multi-exposure stitching.

- Mobile, easy to move and position
- Step, Grip rails
- Clear Plexiglas backing
- Locates into precise position in front of Wall Stand





RESUS ROOM APPLICATION

- ARCOMA PRECISION i5

THE RESUS ROOM

- A Resus room is an area for patients who are admitted, often via ambulance, for resuscitation.
- A typical general hospital has several fully equipped bays and overhead gantrys for portable emergency X-rays.



RESUS CONFIGURATION

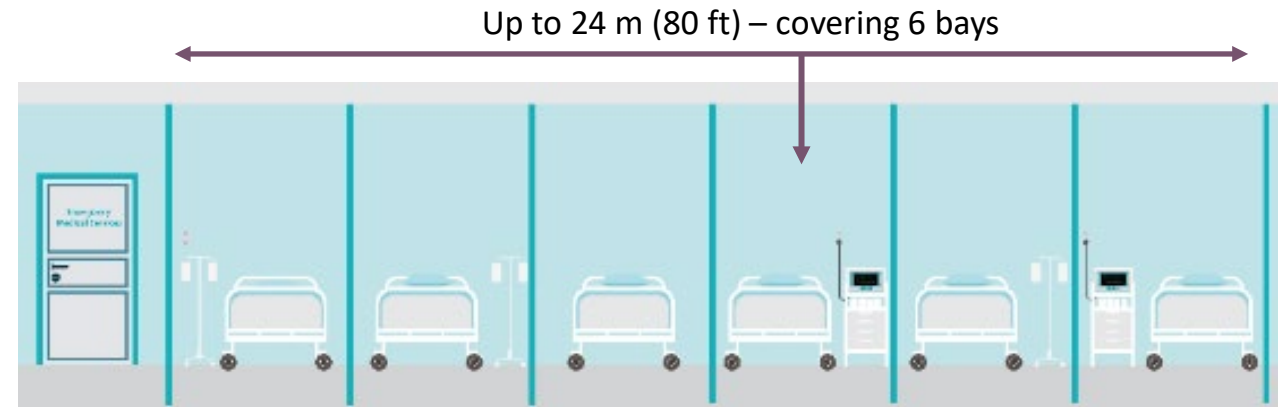
- The Resus configuration for Arcoma Precision i5 consists of only the OTC (without table and wall stand.)
- With an Overhead Tube Crane (OTC) the floor area will be kept as free as possible from obstruction in the busy trauma area.



IDEAL FOR THE RESUS ROOM

The light weighted Intuition and Precision i5 systems are ideal for Resuscitation Room applications.

- Lightweight OTC - ideal for multi-bay coverage
- Keeps floor area around the patient clear
- Integrated exposure buttons, warning lights & Wifi
- Instant preview images allow quick confirmation of positioning
- Quality trauma imaging can be quickly completed
- Up to 24m coverage, with motorised movement between bays



INSTALLATIONS WORLDWIDE



Arcoma products has been installed in many resus rooms worldwide, for example at the Royal London Hospital.



THANK YOU

Arcoma AB | Annavägen 1 | 352 46 Växjö | Sweden



PHONE

+46 470 70 69 00



EMAIL

service@arcoma.se



WEBSITE

www.arcoma.se