

Logic power low

The UserInterface node has detected that the logic power for the board is low

Node: 0x5, **Component:** 0x2, **Reason:** 0x4, **Extra:** 0x0

Reason: The UserInterface (UI) node have detected that the Logic power (24VDC supply) dropped below 18VDC. Possible reasons are loss of 24V logic power or a momentary shortcut on the 24V line.

If the error message can be triggered by touching, pushing, or pulling the display unit there is a chance that the SDB-board inside the display unit came in contact with the metal back plate creating a momentary shortcut. If this is the case, follow the insulation procedure below.

Action: Check 24V to the UI node. Check for damaged cables that could cause momentary shortcuts to ground. Check power supply and appropriate fuses, for example, 1.3F01.

Temporary Measure, Insulation Procedure:



Background:

The SDB-board is mounted close to the metal back plate by design. It has been found that within the tolerance chain of included components the SDB-board and especially the J13 connector of some units can come in contact with the back plate and create momentary shortcuts on the 24V line.

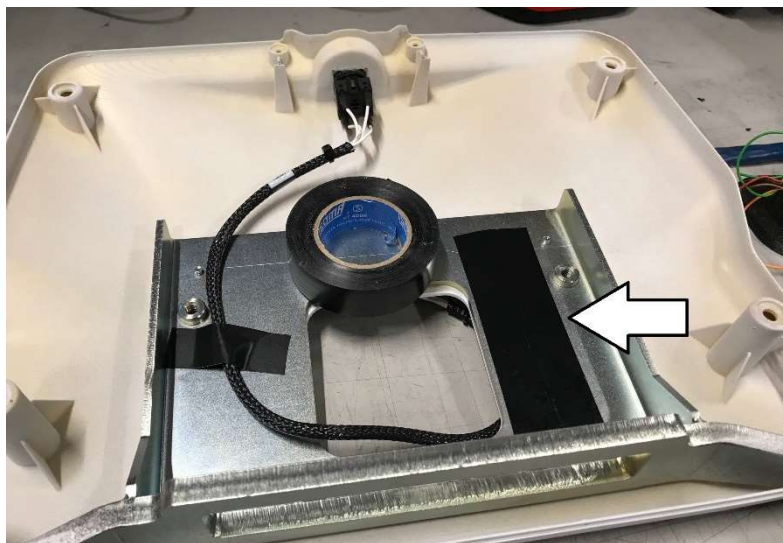
Temporary measure:

Required tools: Assorted Allen keys. Socket wrench. Torx T6, T7 and T20

Dismount the display unit from the OTC and open it. Cover connector J13 of the SDB-board with a small sheet of adhesive insulation gasket (see photo).

or

Cover the appointed area on the display unit back plate with a standard issue electrical tape.



Using one of these two measures, or both, will prevent shortcuts on the 24V line and the error message from appearing.

Reference: Electrical diagrams, Fuse list in Installation & Service manual.