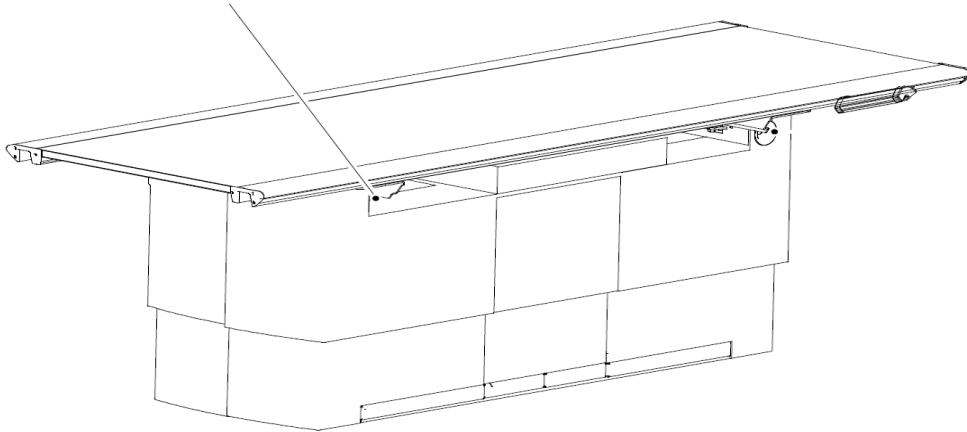


“TABLE Z NOT DRIVING”

APPLICABLE TO:

Intuition 4C systems using this Table type named 0181:



ERROR MESSAGE:

[No error message present]

INFORMATION:

This instruction covers how you get Table to drive vertically (upwards/downwards) again in case it is stuck.

HOW THE AFFECTED FUNCTIONALITY IN THE SYSTEM SHOULD WORK:

When powered on it should always be possible to maneuver Table up and down from handle bar and foot pedal and/or kick list. It is not depending on certain modes or protocol settings.

SYMPTOMS OF THIS ERROR:

It is not possible to drive Table up or down.

POSSIBLE CAUSES:

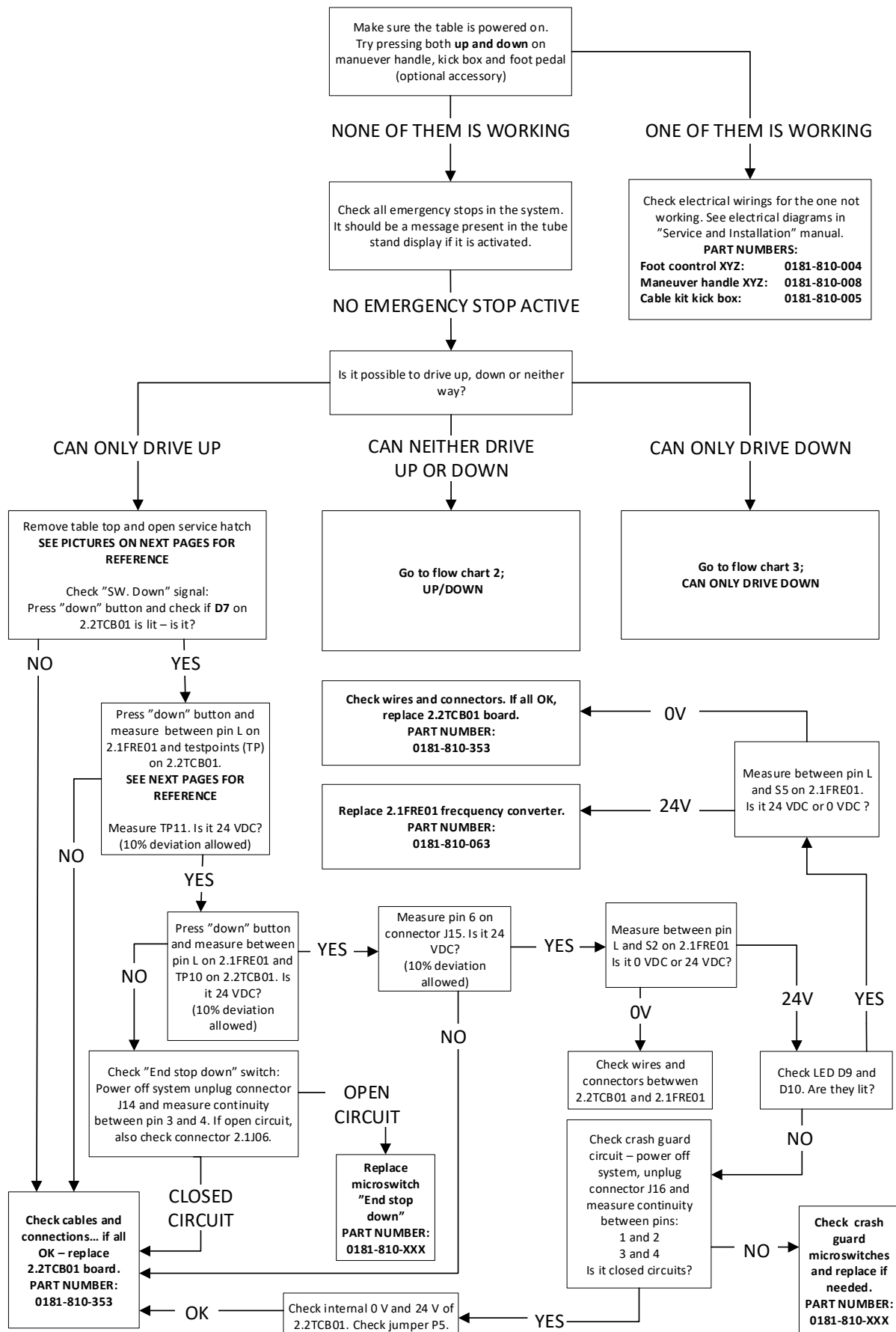
- Emergency stop circuit
- Incorrect mechanical/electrical inputs or damaged circuit board
- Power supply or motor power problems

ACTION STEPS:

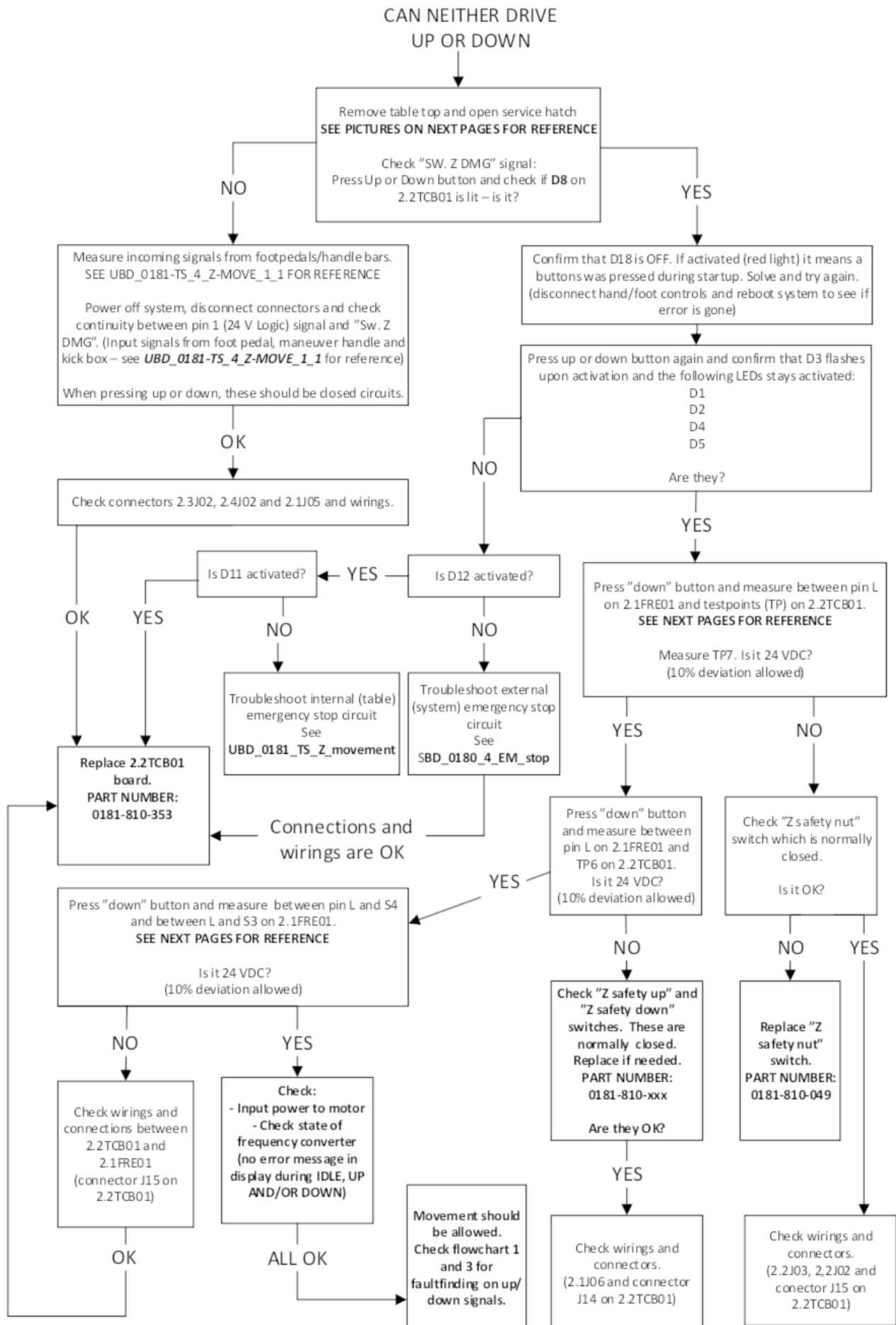
See and follow the flow chart on next page to determine first steps and how to proceed.

The flow chart is followed by reference pictures and explanations.

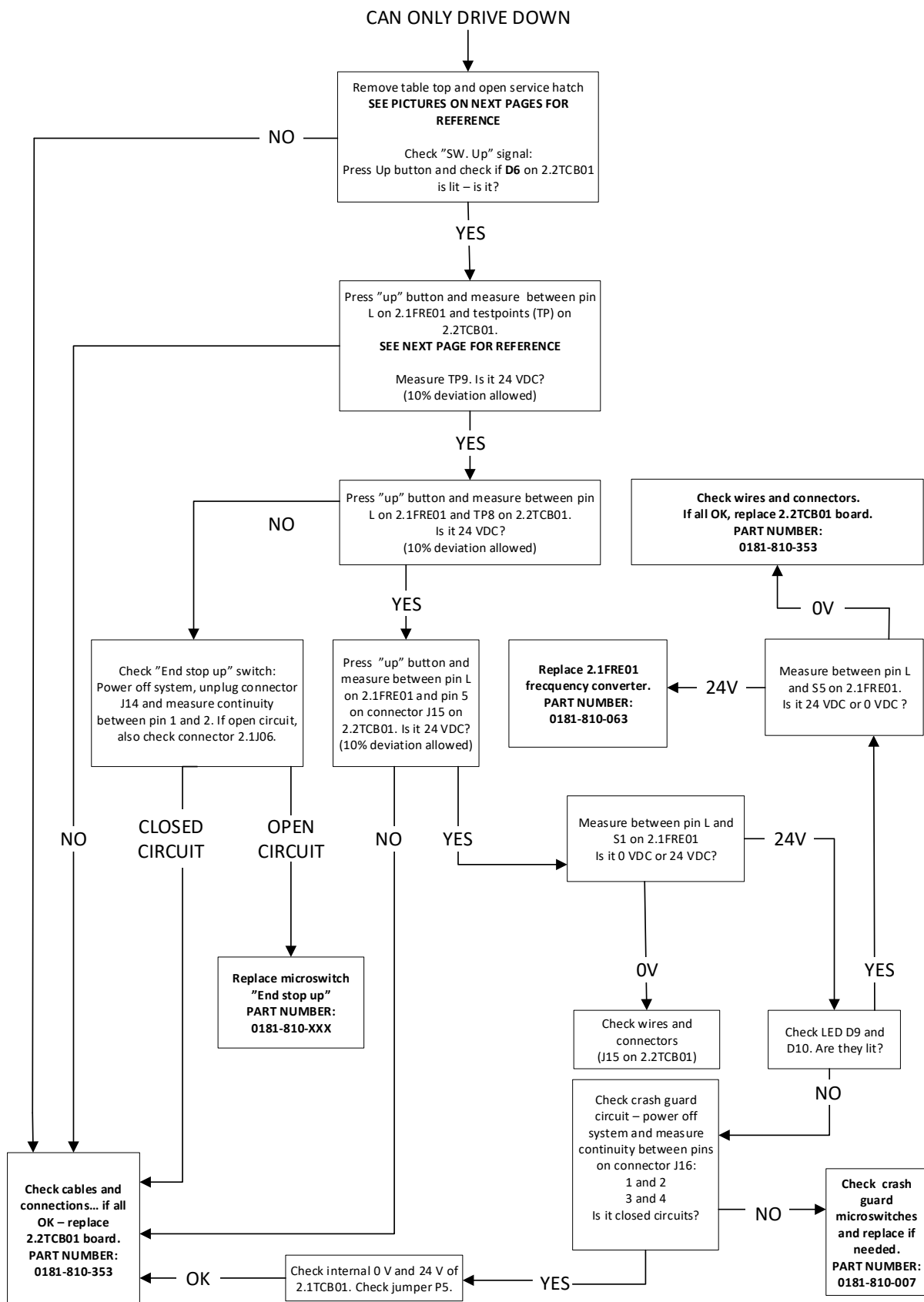
FLOW CHART 1



FLOW CHART 2

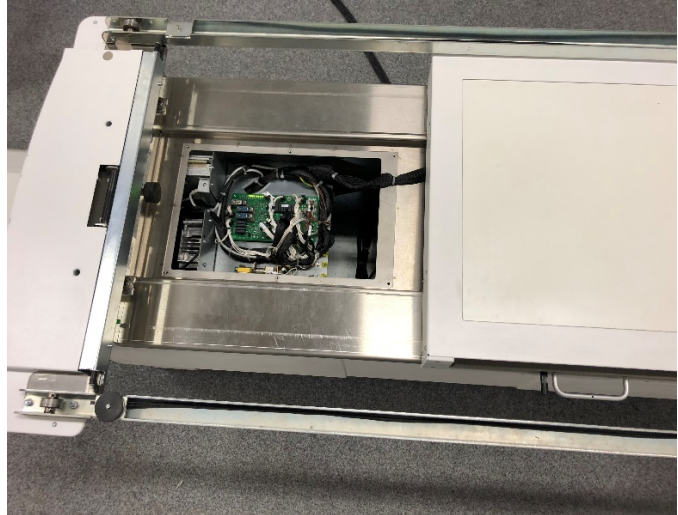
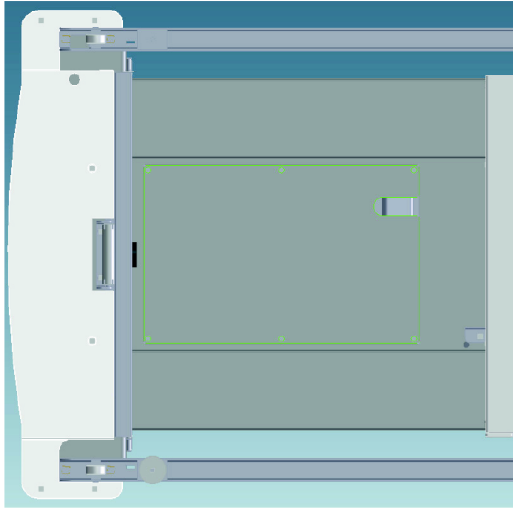


FLOW CHART 3



WHERE TO MEASURE:

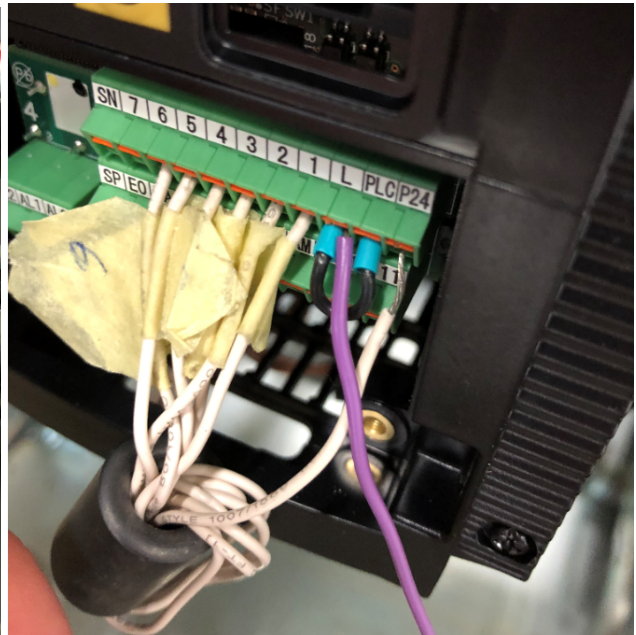
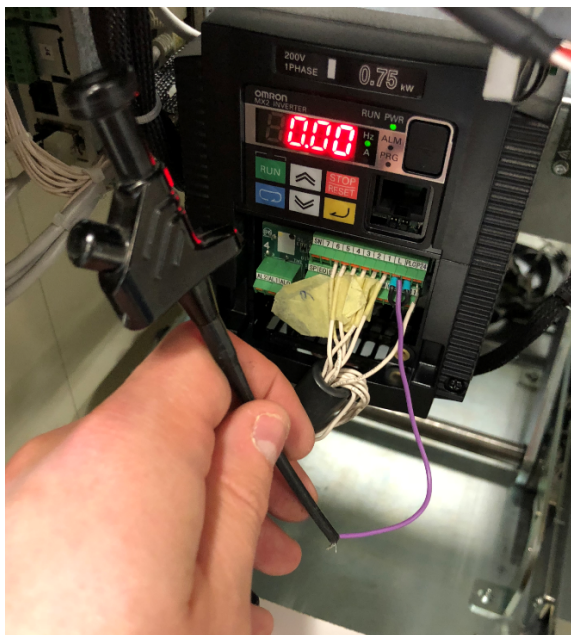
Service hatch and 2.1TCB01 location:



Located underneath the table top. remove the six allen screws and lift the plate upwards.

Pin L (and other inputs/outputs) on 2.1FRE01:

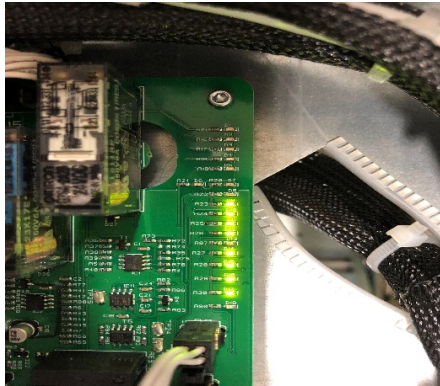
(Pin L to use as a reference when measuring 24VDC on 2.1TCB01 as described in above flow chart)



Since there is no accessible surface to measure at, an additional wire must be inserted for this purpose.

2.1TCB01 LED OVERVIEW:

WHEN IN IDLE:



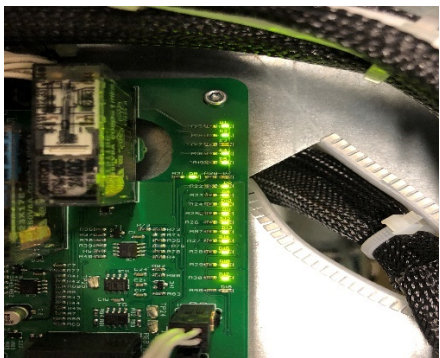
LEDs ON:

9, 10, 11, 12, 14, 15, 16, 17

LEDs OFF:

1, 2, 3, 4, 5, 6, 7, 8, 13, 18

WHEN DRIVING UPWARDS:



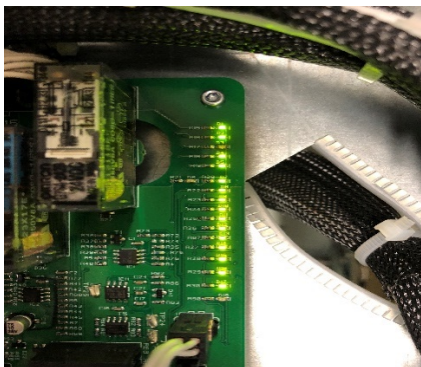
LEDs ON:

1, 2, 4, 5, 6, 8, 9, 10, 11, 12, 13, 14, 15, 16, 17

LEDs OFF:

3, 7, 18 (*LED 3 only flashes ON initially*)

WHEN DRIVING DOWNWARDS:



LEDs ON:

5, 6, 7, 8, 9, 10, 12, 13, 14, 15, 16, 17

LEDs OFF:

3, 6, 18 (*LED 3 only flashes ON initially*)

- *END OF DOCUMENT* -