

# UDI\_0073-815-004 Camera, Patient view

## How to install the Patient view camera option

**APPLICABLE TO:** Precision i5 (CanonNE 3.10 required)



### TOOLS NEEDED:

- Standard Service tools.
- Service laptop.
- RS-232 Service cable p/n 1100-810-201.
- Installation & Service Manual
- SwUDI\_A010 Software update instructions, Arcoma Overlay

### PROTECTIVE MEASURES:

#### **CAUTION!**

*Printed circuit boards contain electrostatic highly sensitive components requiring particular care in their handling. Ground before making contact and place only on a conductive surface.*

#### **CAUTION!**

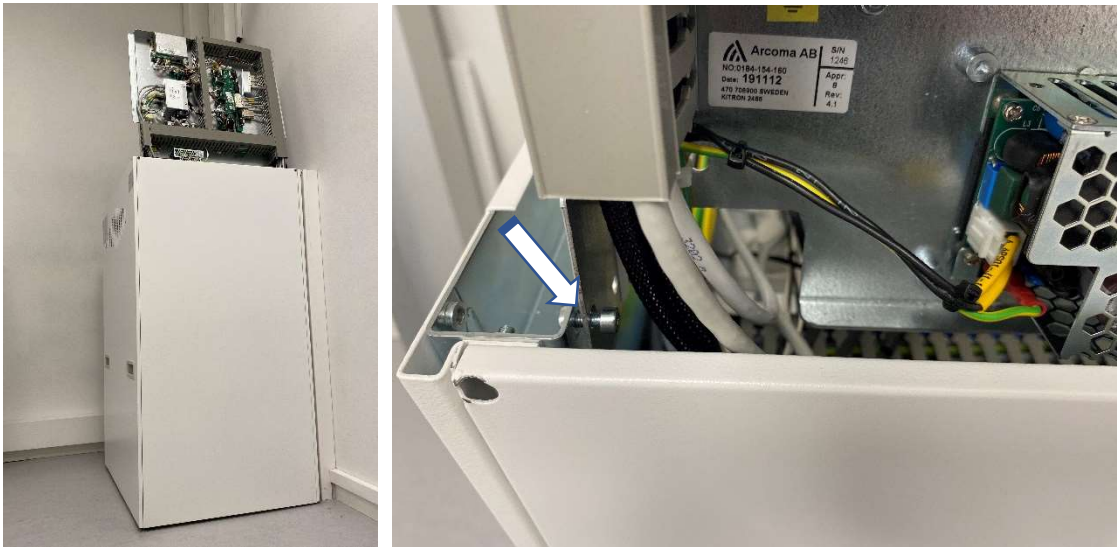
*Remaining energy may exist when the equipment is switched off. Always wait at least 15 seconds before working on the system.*

### ACTION STEPS:

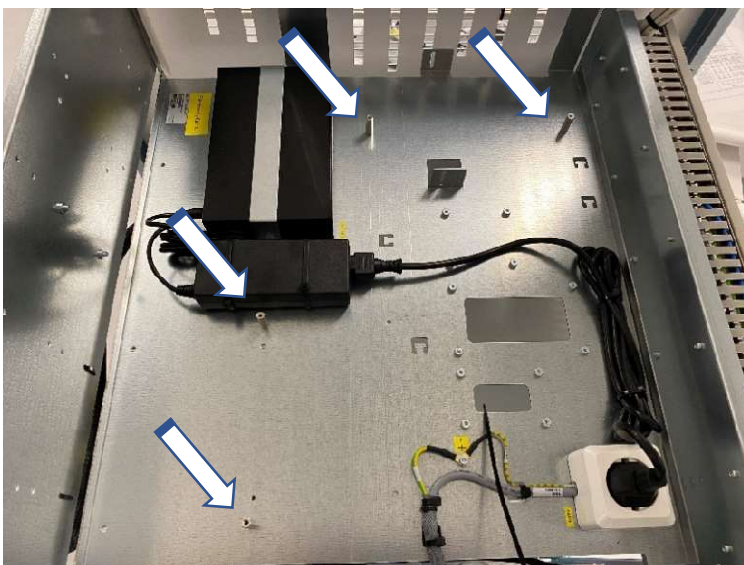
1. Test the system to confirm that it is fully functional.
2. Place the OTC in a good working position where the tube head can be easily accessed.
3. Turn the system OFF from the generator mini console.



4. Remove the top cover from the system cabinet.
5. Fold up electrical plate 4.4 and secure it using two M4 screws.

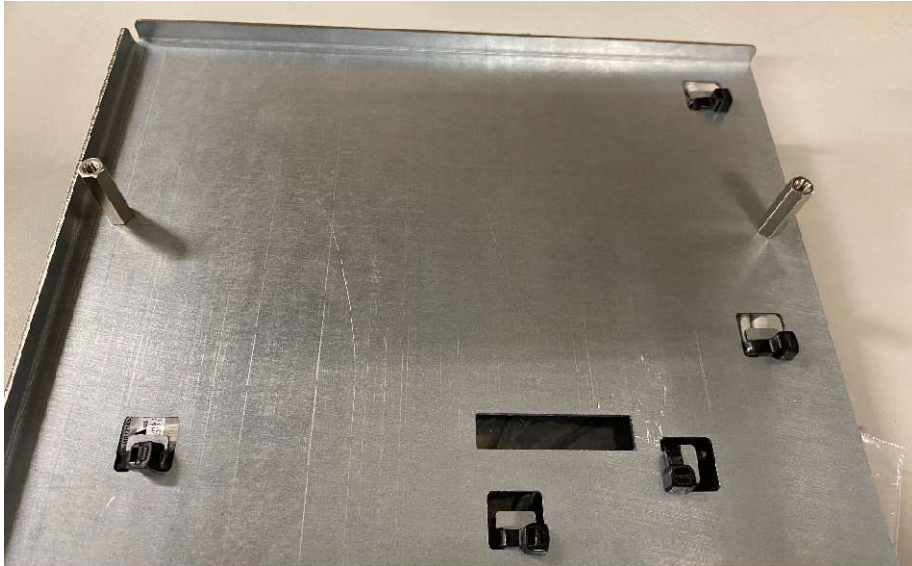


6. Mount the four distance pieces on electrical plate 4.5.

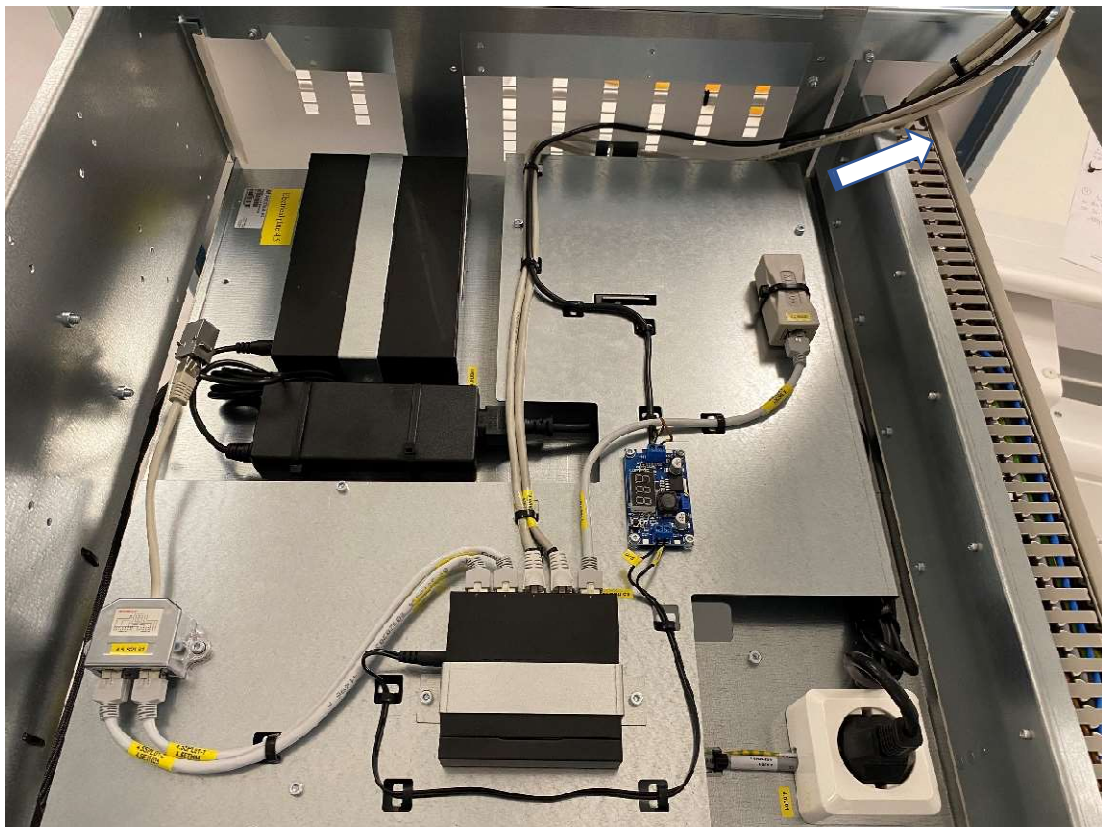


7. **NOTE!** Older revisions of the electrical plate may not have all holes available. In this situation mount distances in the available holes and mount the remaining distances on the plate from the upgrade kit to support it. There is **no need** to drill extra holes for this purpose.

If the network switch is mounted in the area for the upgrade kit remove it from its attachment points and place it on an open space. It does not need to be attached by screws.

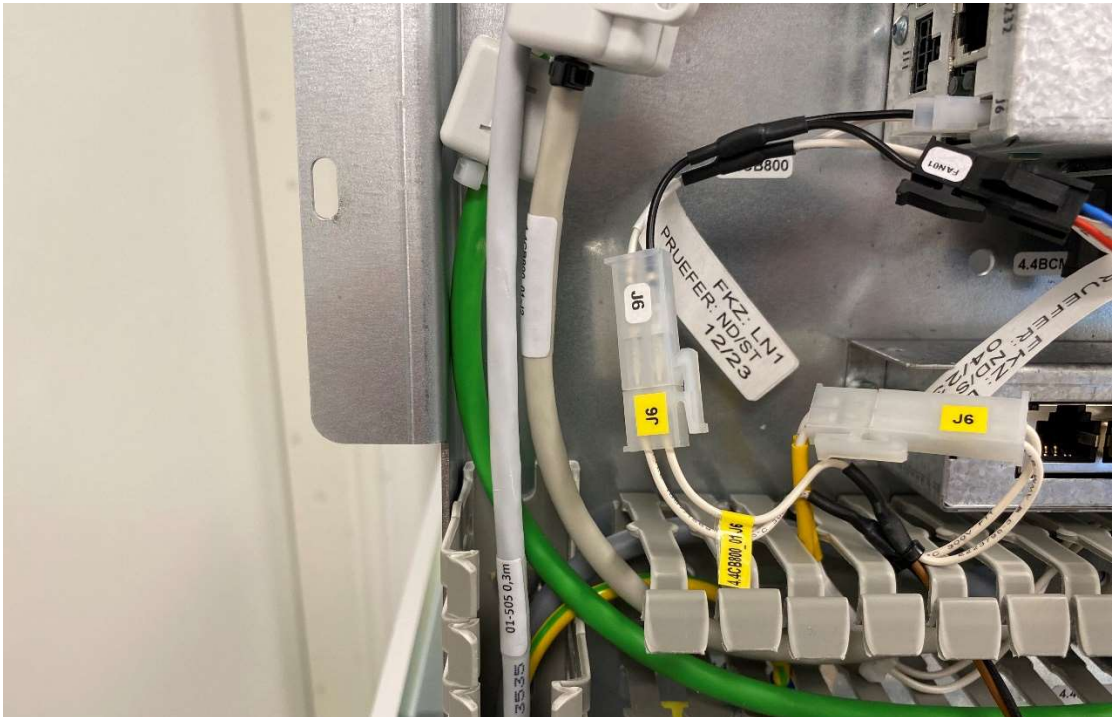


8. Place the electrical plate from the upgrade kit on top of electrical plate 4.5 and secure it with the four M4 screws.

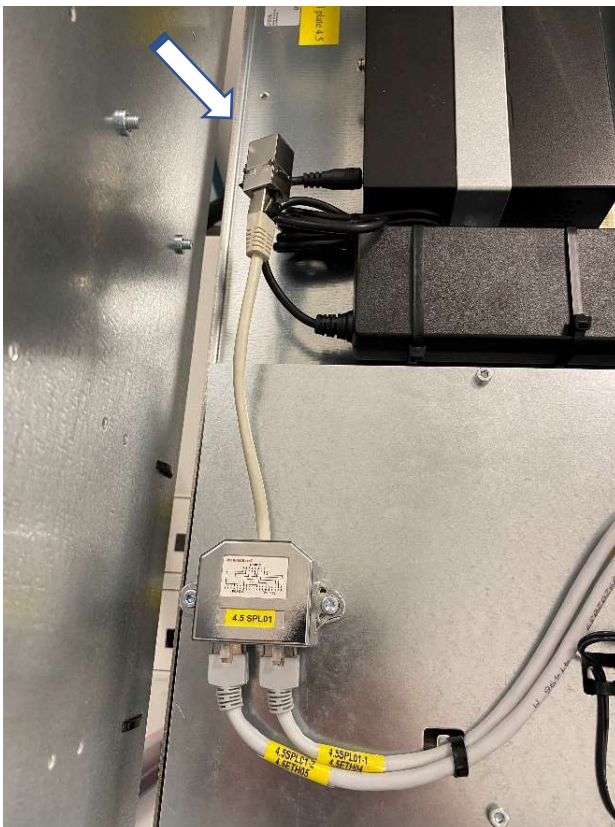


9. Rout cables from the upgrade kit towards electrical plate 4.4.

10. Disconnect the CB800 power supply cable J6 and connect the cables marked J6 from the upgrade kit. Re-connect CB800.



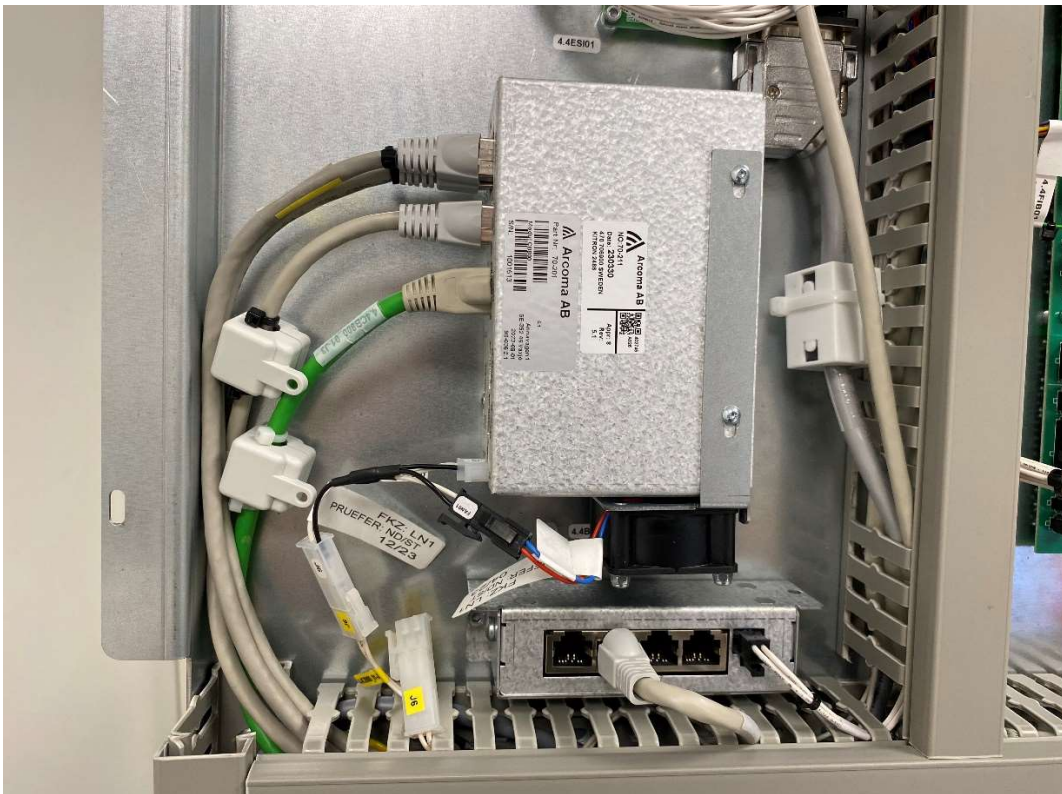
11. Disconnect cable 1.3DISP01 from 4.4CB800\_01 J0, pull the cable back and connect it to 4.5SPL01 PORT3.



12. Disconnect cable 4.4ETHCB800 from 4.4CB800\_01 J1, pull the cable back and connect it to 4.5ISO01.



13. Connect both Ethernet cables from the upgrade kit to 4.4CB800\_01 ports J0 and J1, see labels on cables.



14. Remove the OTC tube cover by releasing the six screws. To prevent damage to the emergency stop cable, carefully lift the cover off.



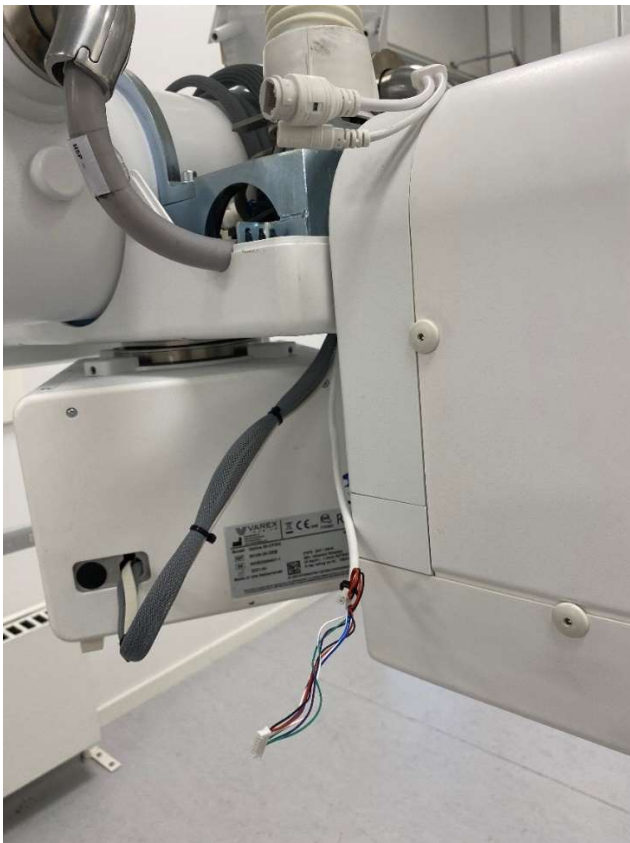
15. Carefully bend the clips for the emergency stop and remove it from the cover. The cover can now be moved out of the way for the next steps.



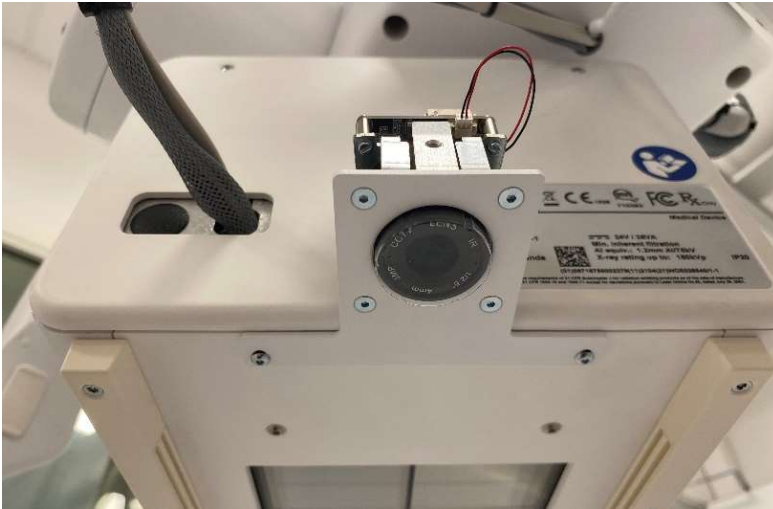
16. Release and remove the two screws on the bottom cover of the collimator.



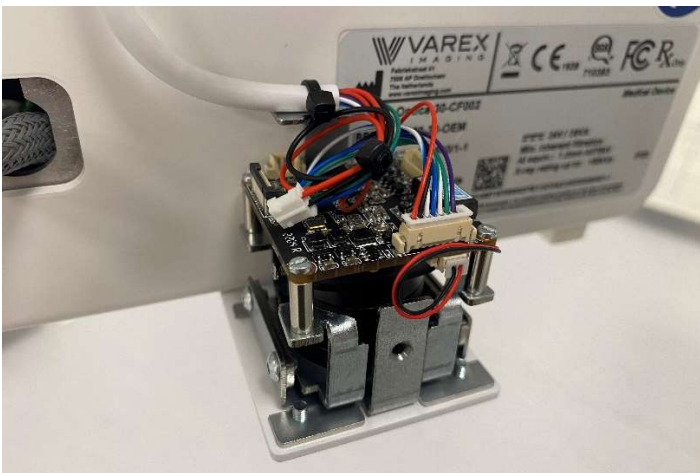
17. Pull the camera cable from the upgrade kit through the hole in the bottom cover of the tube head. **NOTE!** Be careful, the cable connector is sensitive.



18. Using the two original screws, mount the camera bracket on the collimator.



19. Connect the cable and secure it with a cable tie. The two-pin connector (red and black wire) from the camera cable is not used (see picture).



20. Secure the camera cable to the collimator harness and mount the camera cover.



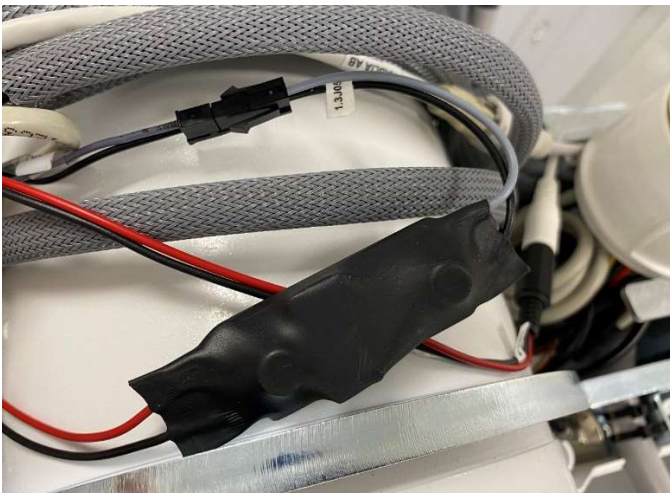
21. Connect the output connector (12VDC) from 1.3PS01 to the camera cable (1.3J08).



22. Disconnect 1.3J05.



23. Connect the input connector (24VDC) from 1.3PS01 to connector 1.3J05.



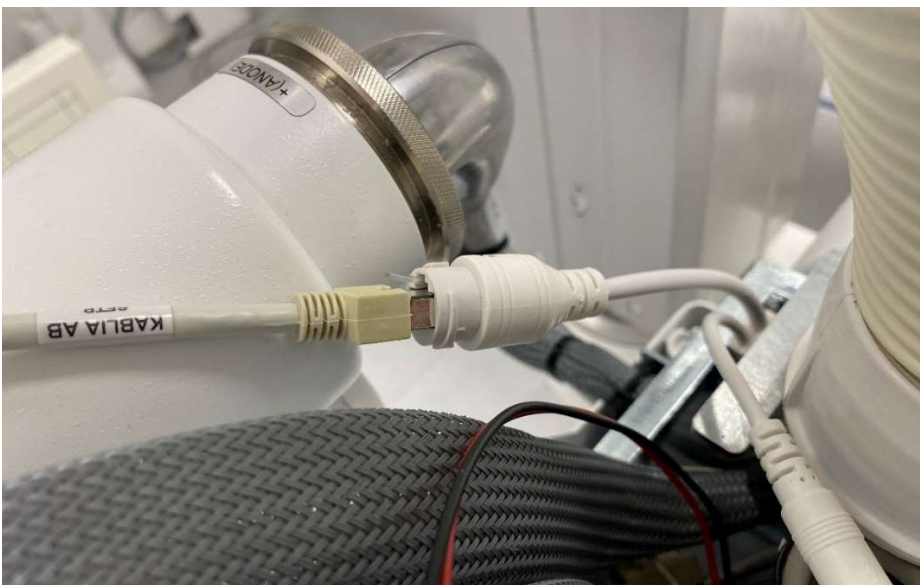
24. Disconnect the display ethernet cable 1.3J03 (1.6J03) from the RJ45 adapter and connect it to PORT1 of the splitter 1.3SPL01.

25. Connect the splitter cable (PORT3) to the RJ45 adapter.



26. Connect a patch cable from the upgrade kit to the splitter PORT2.

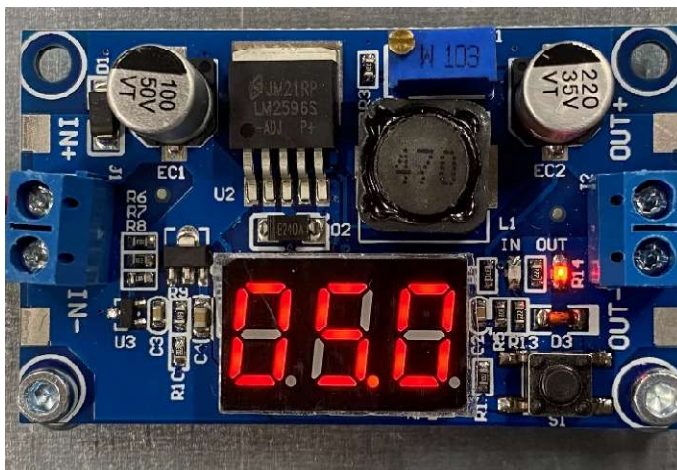
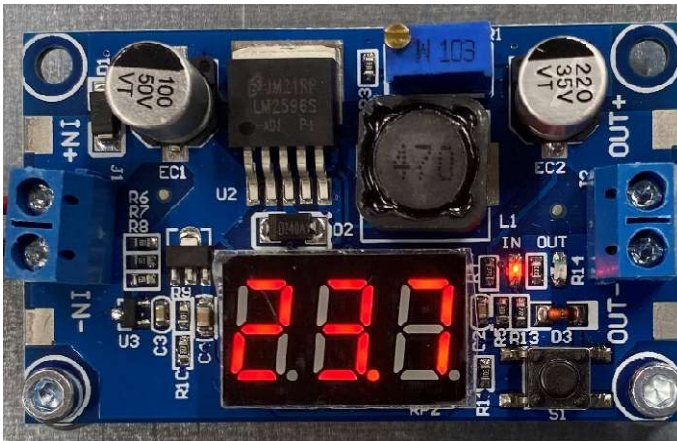
27. Connect the other end of the patch cable (from 1.3SPL01 PORT2) to the camera cable.



28. Turn on the system from the generator min console.



29. Confirm that the output voltage of 4.5PS02 is 5,0V. Use button S1 to toggle between input and output voltage display. Adjust voltage on VR1 if necessary.

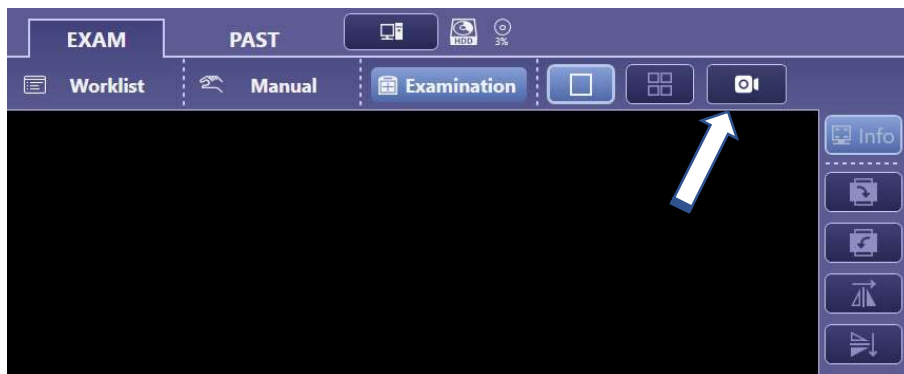


The software for the camera function (Arcoma overlay and NERF) is available on the Arcoma partner portal.

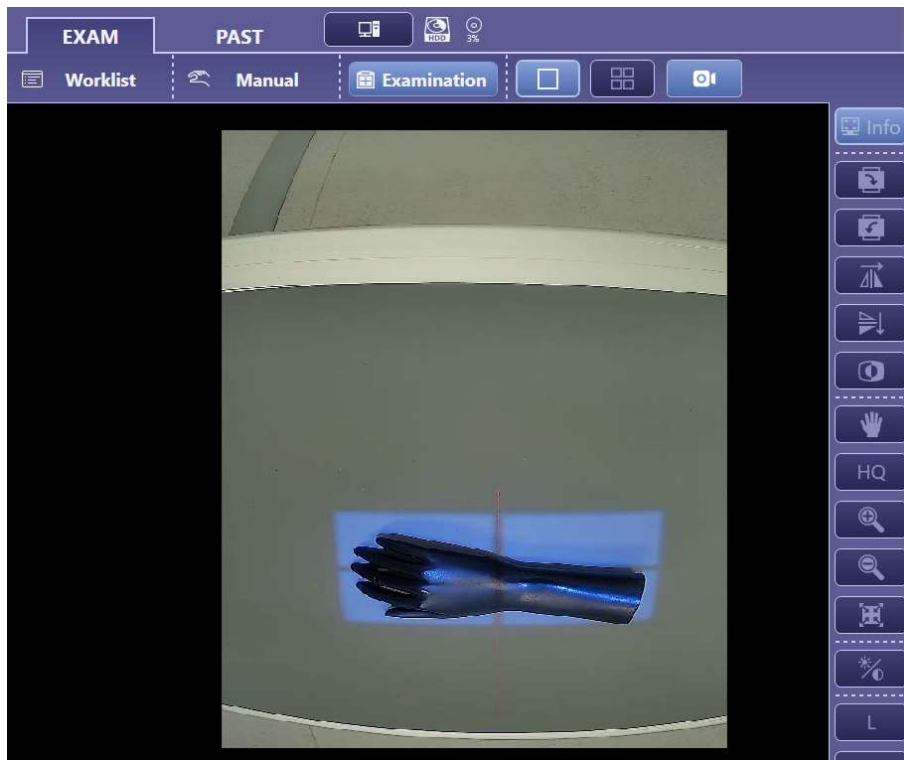
For software compatibility, see latest version of SwRLN\_P004.

**NOTE!** Software version must be version 1.1 (59) or later.

30. Confirm that the system software is correct. Update if necessary.
31. Follow the instructions in SwUDI\_A010 chapter 3.1 First installation to install the Canon NERF server.
32. Follow the instructions in SwUDI\_A010 chapter 3.1 First installation to install the Arcoma Overlay.
33. A camera icon should appear when an examination is started.



34. Press the camera icon to show the video stream from the patient view camera.



**END OF DOCUMENT**