

0200-095-252 Table brake, Y - Upgrade

APPLICABLE TO: Precision i5, Precision T3



SPARE PART:

Part number:

n.a

"n.a"

TOOLS NEEDED:

- Standard Service tools.
- T-Handle Hex. 2,5 and 4mm
- Cable ties



PROTECTIVE MEASURES:

CAUTION!

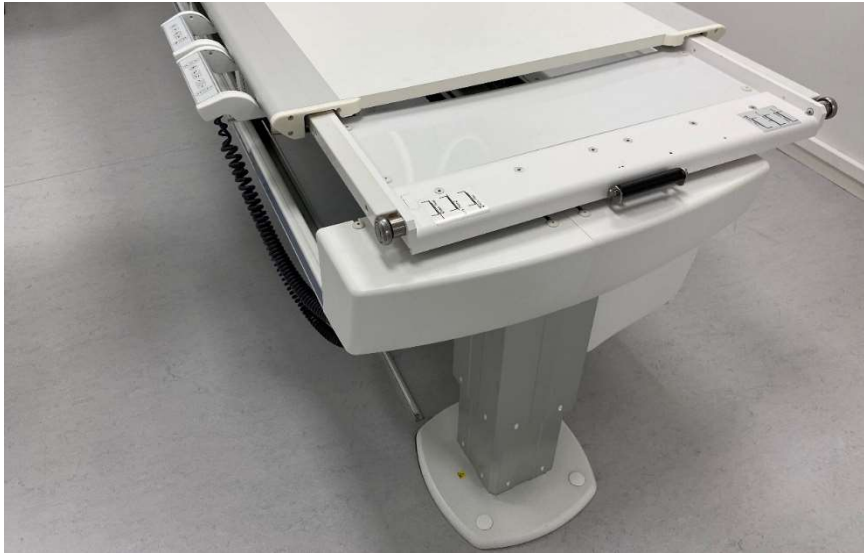
Printed circuit boards contain electrostatic highly sensitive components requiring particular care in their handling. Ground before making contact and place only on a conductive surface.

CAUTION!

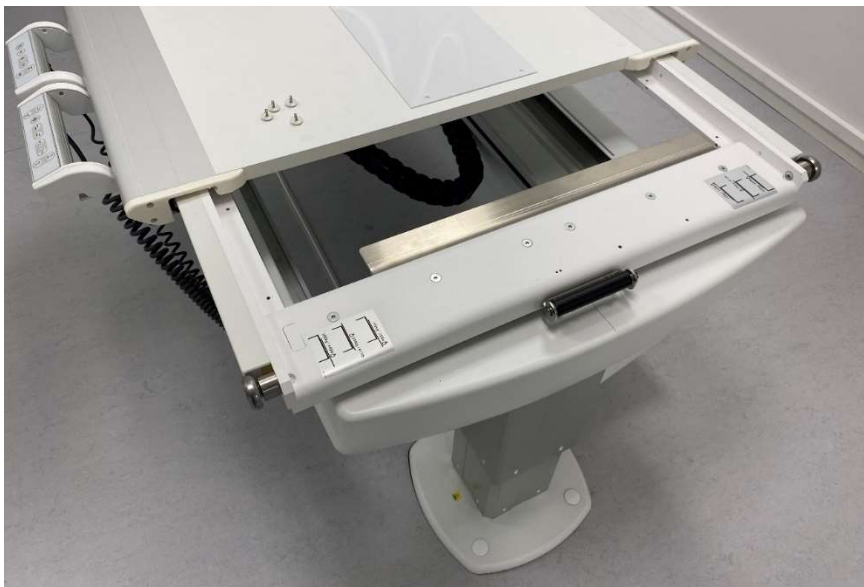
Remaining energy may exist when the equipment is switched off. Always wait at least 15 seconds before working on the system.

ACTION STEPS:

1. Place the table in a convenient working position.
2. Release the tabletop brakes from the hand- or foot control and slide the tabletop to expose the area for the foot side Y brake.



3. Release and remove the four screws holding the protective sheet. Remove the sheet.



4. Release and remove the two screws for the brake plate. Remove the brake plate to expose the foot side Y-brake.



5. Release and remove the screw holding the brake unit. Disconnect the Micro Mate'n'lok connector and remove the brake unit.



- Using a 2,5mm hex key, release and remove the three M4 screws in the picture to open the electric compartment of the table. **NOTE!** Fold down the electrical plate carefully. It is heavy.



- Remove the back cover.



- Mount the shafts, springs and M5x30 screws from the upgrade kit. Do not tighten screws yet.



9. Position the brake from the upgrade kit on the shafts with the cables facing towards the back of the table. Now tighten the screws.

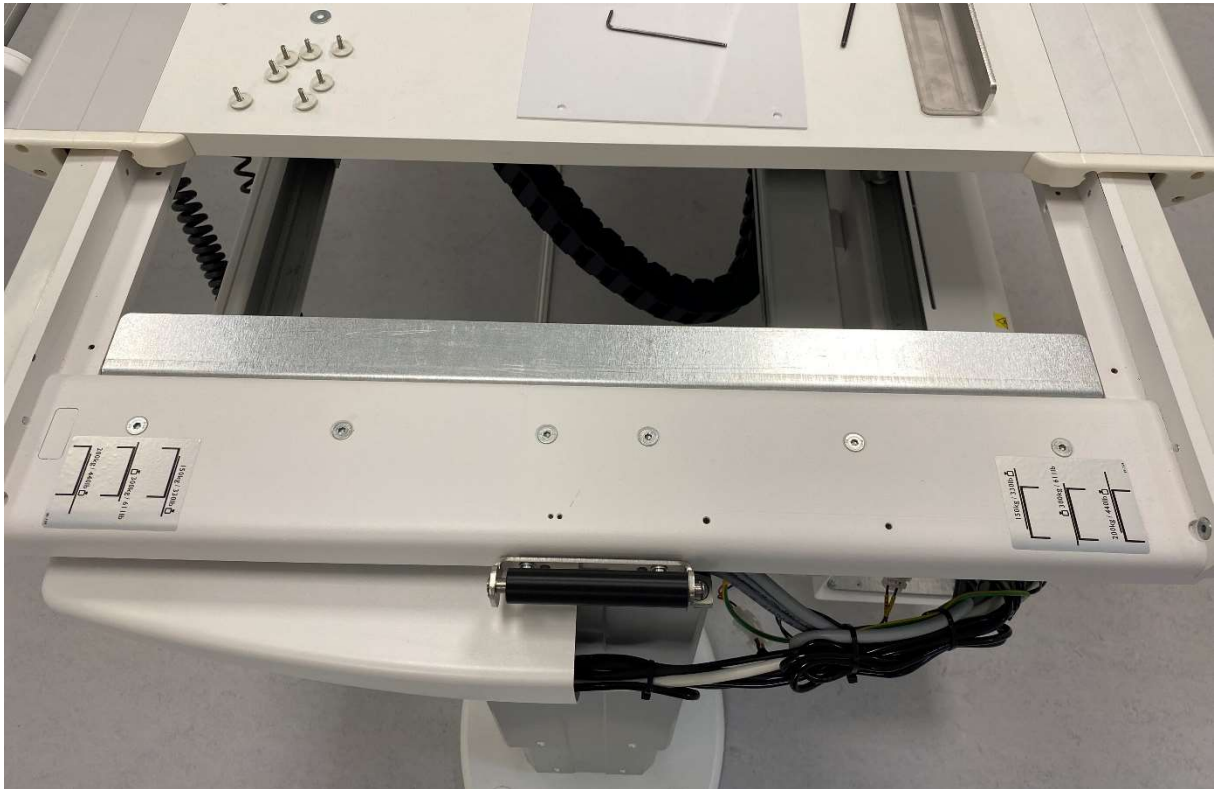


10. Connect the Micro Mate'n'lok connector that was disconnected in step 5 to the new brake unit.

11. Mount the original K6S M4x8 screws.



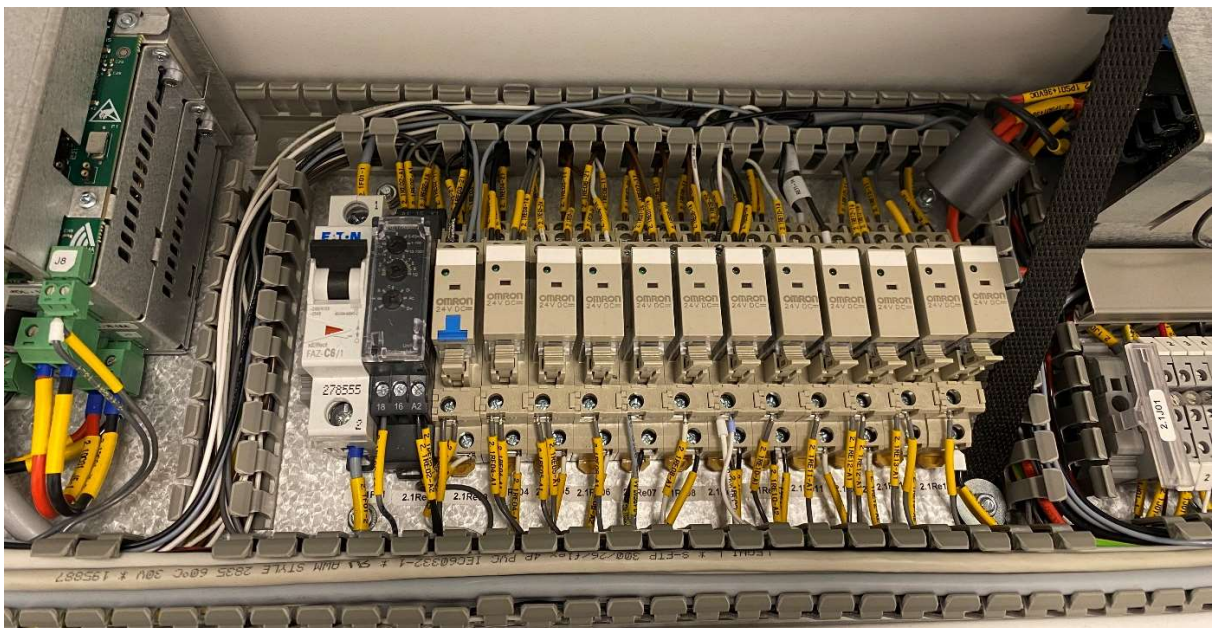
12. Position the new brake plate from the upgrade kit on the two K6S screws. Push the plate down to align it with the brake unit and tighten the screws.



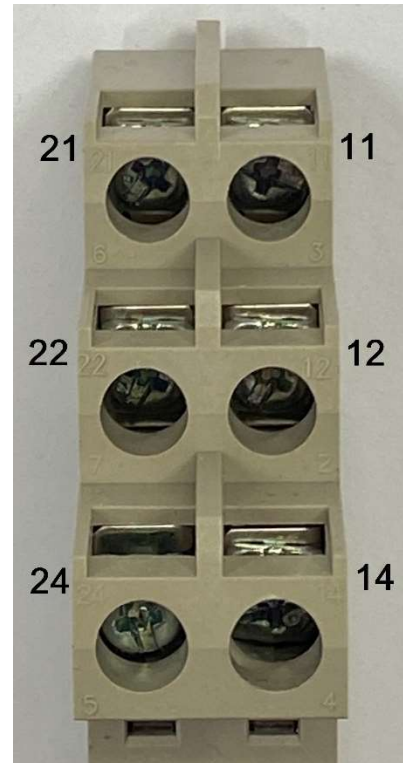
13. Remount the protective sheet that was removed in step 3.

14. Repeat the same procedure for the head side tabletop brake, Y.

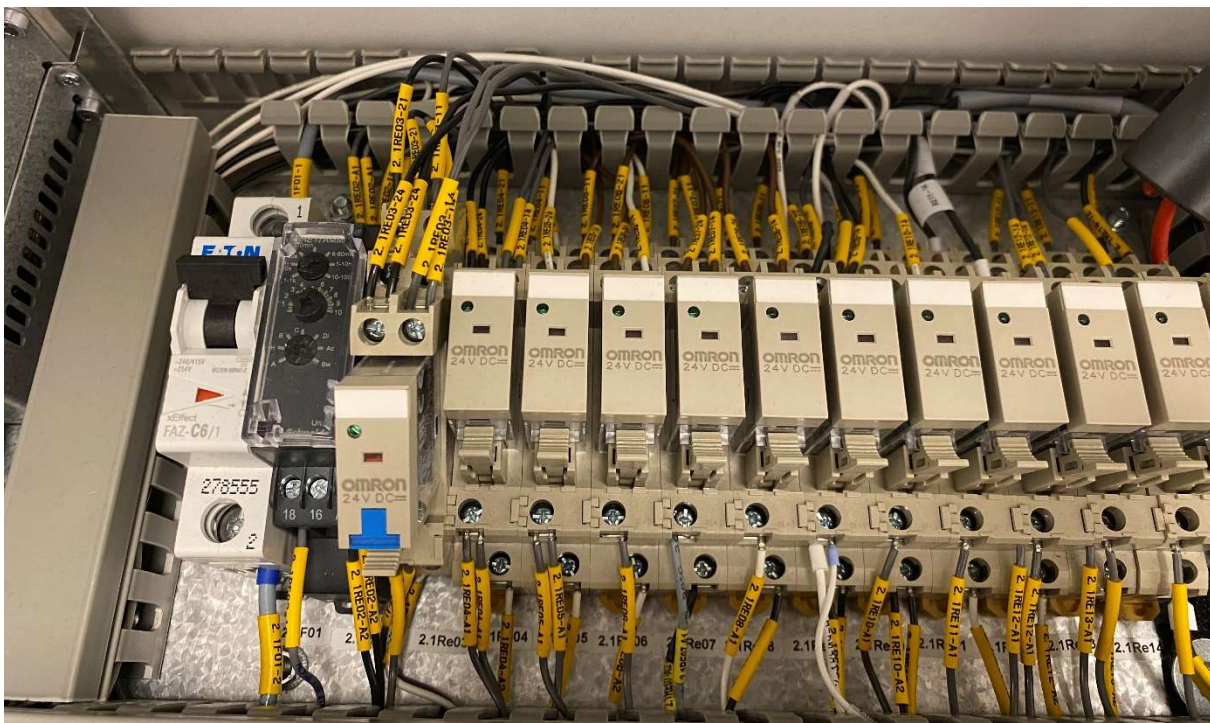
15. Locate relay 2.1RE03 on the electrical plate.



16. Use a screwdriver to release the relay socket from its DIN-rail to make it more accessible for the next steps.



17. Connections of 2.1RE03



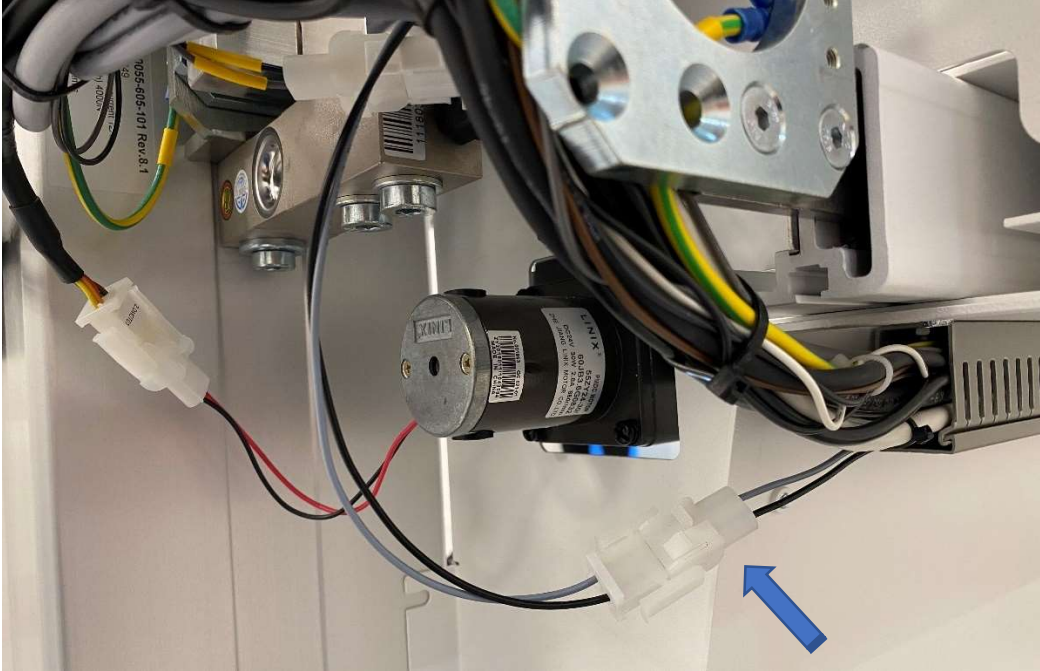
18. Disconnect both wires from 2.1RE03-11 and connect them to 12.

19. Disconnect both wires from 2.1RE03-14 and connect them to 11.

20. Disconnect both wires from 2.1RE03-21 and connect them to 22.

21. Disconnect both wires from 2.1RE03-24 and connect them to 21.

22. Bring the two cables from the upgrade kit.
23. Connect both gray wires from the upgrade kit cable to 2.1RE03-14.
24. Connect both black wires from the upgrade kit cable to 2.1RE03-24.
25. Re-mount the relay on its DIN-rail and rout cables towards the tabletop brakes.



26. Connect the cables to both foot side and head side brakes.

END OF DOCUMENT