

SPI_0073-810-101 Manoeuvre display cpl.

How to replace the OTC Display unit

APPLICABLE TO: Precision i5



Part number : 0073-811-101



TOOLS NEEDED:

Standard Service tools.

Ratchet with Allen key bits

Service laptop.

SUP-node. **NOTE!** An external SUP-node may be required in situations where software for the Collimator/UI-node must be loaded.

PROTECTIVE MEASURES:

CAUTION!

Printed circuit boards contain electrostatic highly sensitive components requiring particular care in their handling. Ground before making contact and place only on a conductive surface.

CAUTION!

Remaining energy may exist when the equipment is switched off. Always wait at least 15 seconds before working on the system.

ACTION STEPS:

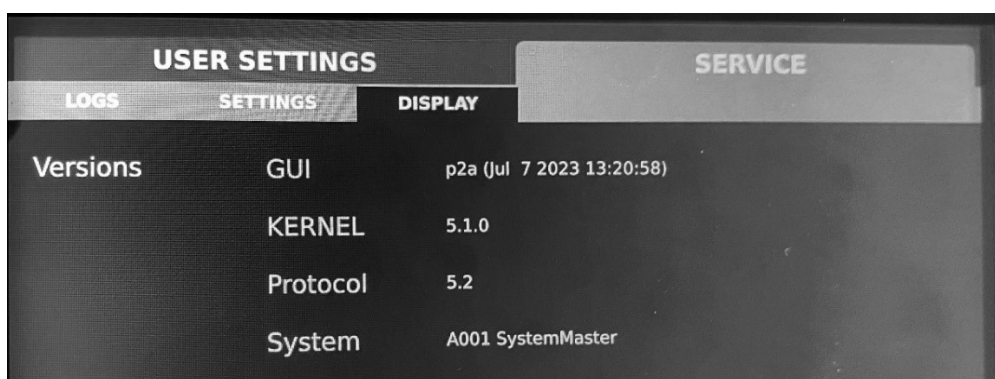
1. Test the system to confirm its current state.
2. Check current software versions of the display unit.
3. Press and hold the Settings icon in lower left corner of the display to open the Settings menu.



4. Select the *SERVICE* tab and *SETTINGS* menu. Enter password *1895*.
5. Note the software version of the *Collimator* node. In the example picture below, the version is 2.1.B. This is also the version that must be used in the new spare part later for compatibility.



6. Select the *SERVICE* tab and *DISPLAY* menu.
7. Note the version of *GUI* representing the display unit software version. In the example picture below, the version is p2a. This is also the version that must be used in the new spare part later for compatibility.



8. Save a parameter backup file from the Service program ArcoCeil.

NOTE! If it isn't possible to confirm software versions due to the status of the machine, check service records or system documentation to establish software versions and use a previously saved parameter backup file.

9. Place the OTC in a good working position where it can be easily accessed.
10. Turn the system OFF from the generator mini console.



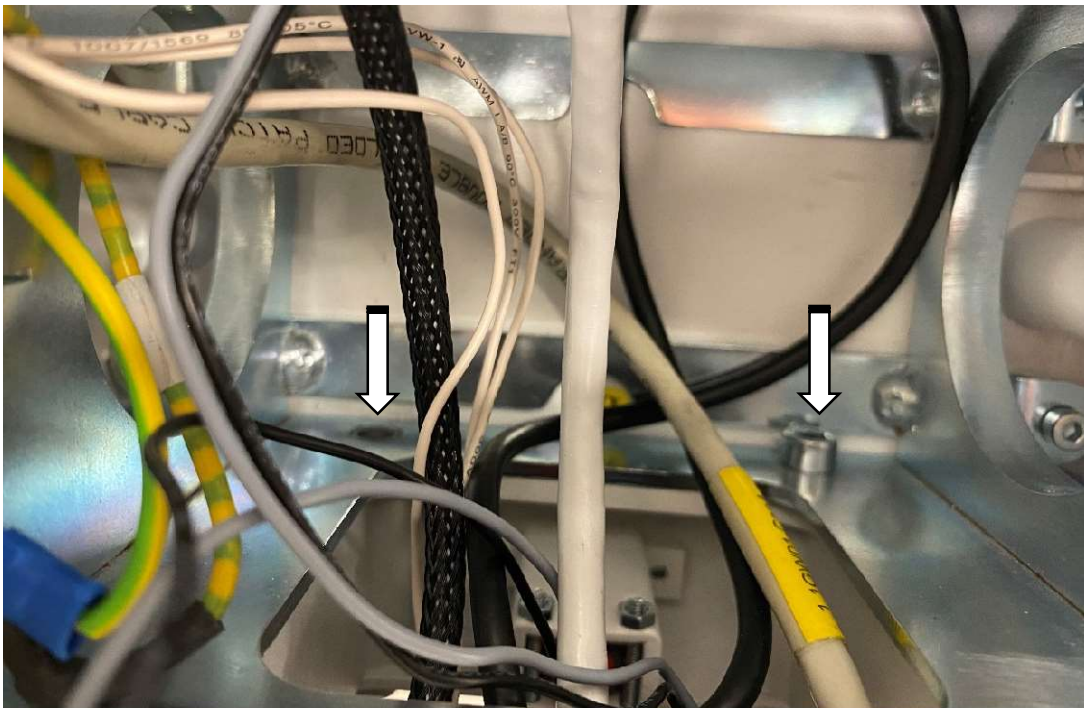
11. Release and remove the six screws for the OTC tube cover. To prevent damage to the emergency stop cable, carefully lift the cover off and turn it out of the way to access the back of the display unit.



12. It is also possible to disassemble the emergency stop to improve access. Carefully bend the clips for the emergency stop and remove it from the cover. The cover can now be moved out of the way for the next steps.



13. Using a ratchet with a 5mm Allen key bit, release and remove the two M6 screws on the bottom of the display bracket.



14. Disconnect the following cables from the display unit:



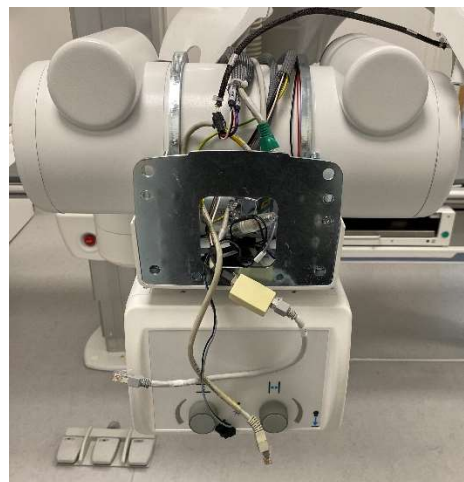
Connector name:
 CAN1
 CAN2
 ETHERNET
 USB
 J206

Cable name:
 1.3DSP01 – J200
 1.3DISP01 – J201
 1.3DSP01 – J6
 1.3DISP01 – J9
 1.3DISP01 – J206

15. Release and remove the remaining two M6 screws on the top of the display bracket.
 NOTE! Support the display to prevent it from falling.



16. Remove the display unit and its distance piece.



17. Bring the new display unit and its distance piece. Connect all cables from the tube head. See previous step.
18. Mount the four screws to attach the new display unit to the display bracket.
19. Turn the system ON from the generator mini console.



NOTE! The new display unit is preconfigured from factory. It is prepared with the correct type of software for the application, but the version may need to be updated in the coming steps.

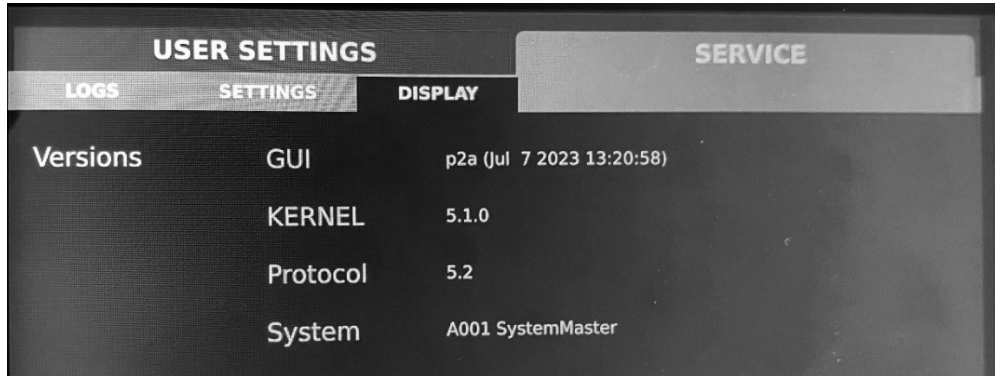
The new display has not been prepared with parameters. Use your saved backup.

Error messages such as *Unsupported collimator type* is normal at this point.

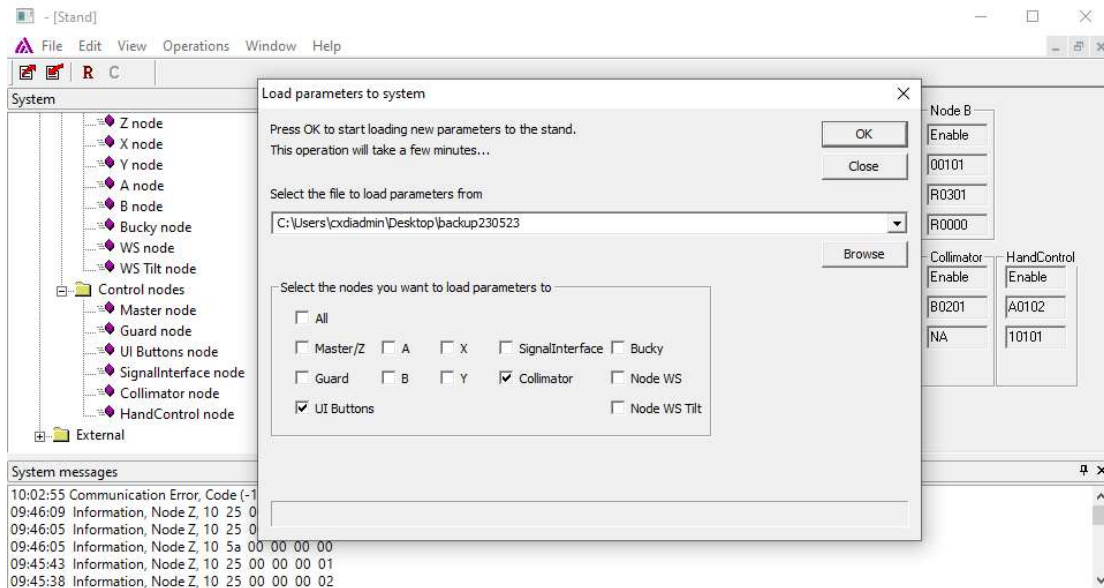
20. Select the *SERVICE* tab and *SETTINGS* menu. Enter password 1895.
21. Check the software version of the *Collimator* node and confirm that it is the same as in step 5 above. If it is not the same, follow instructions to update software in the Collimator/UI-node.



22. Select the *SERVICE* tab and *DISPLAY* menu.
23. Check the version of *GUI* representing the display unit software version and confirm that it is the same as in step 7 above. If it is not the same, follow instructions to update software in the Display.

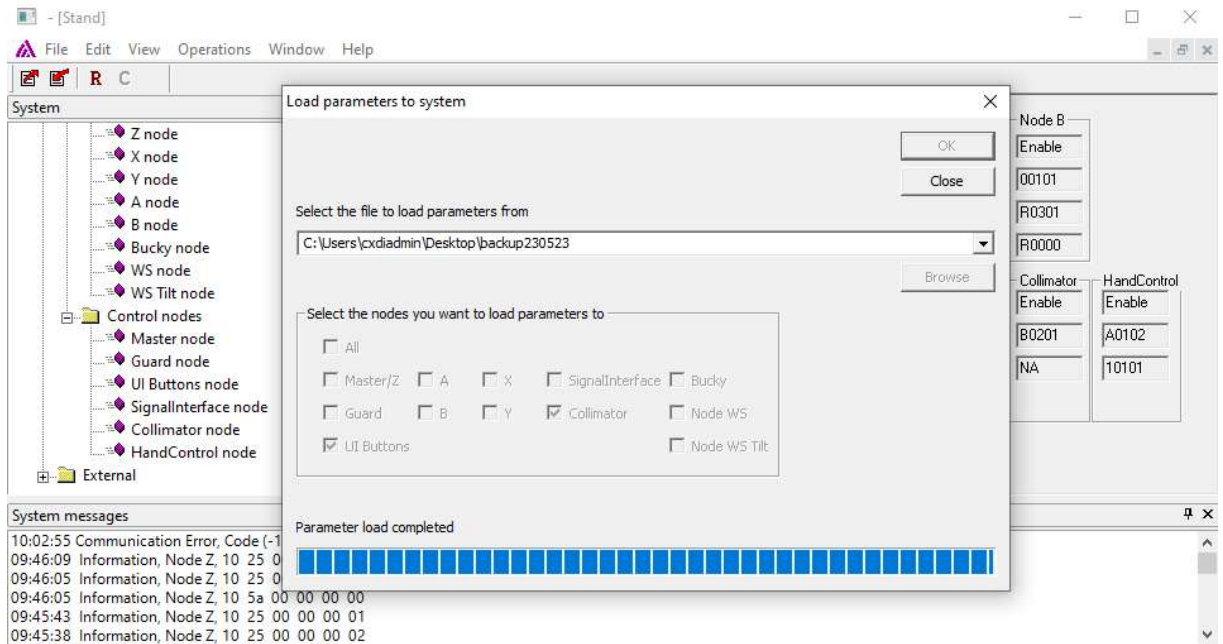


24. Launch the ArcoCeil Service program to load parameters to the new spare part.
25. Select Operations / Load parameters to system to open the menu.
26. Browse to the location of the appropriate parameter backup (select the file to load parameters from).
27. Select the Collimator and UI buttons nodes.

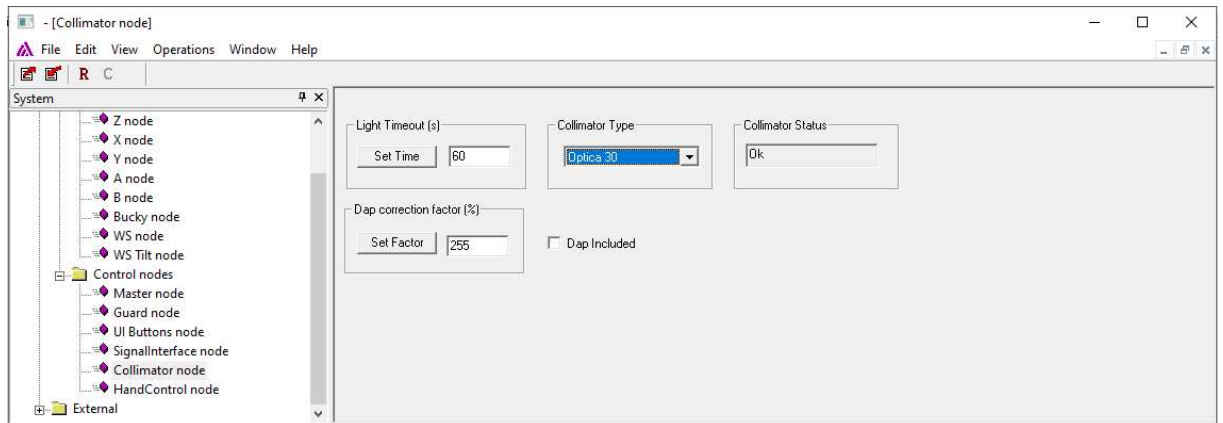


28. Press OK

29. Wait for the parameter load to finish. The message "Parameter load completed will be displayed.



30. Restart the system and confirm correct Collimator node settings.



31. The replacement actions are now done, and the system can be restored.

32. Test the system and confirm that it works as expected.

END OF DOCUMENT