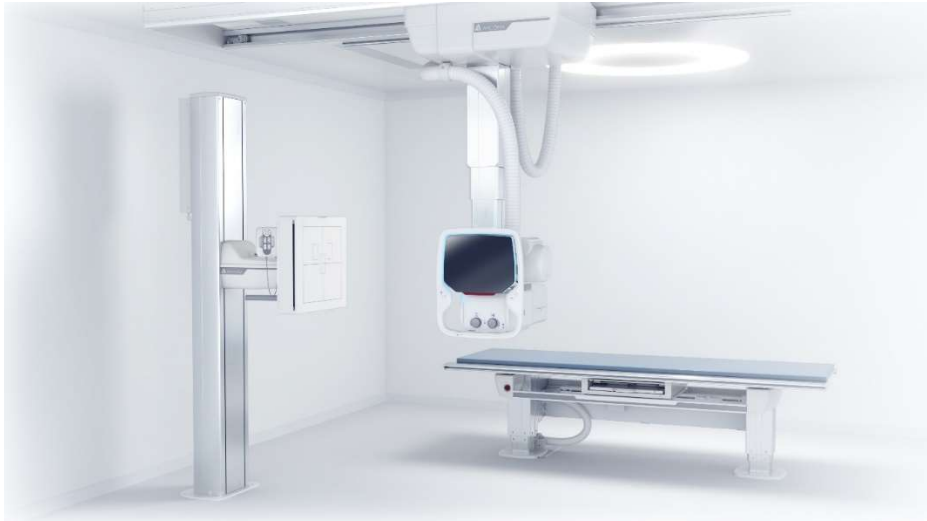


# SPI\_0070-811-250 Motor unit assembly, Beta

How to replace the beta motorunit

**APPLICABLE TO:** Precision i5, Precision T3



**SPARE PART:**



Spare part number:

**0070-811-250**

**"Motor unit assembly, Beta"**

**TOOLS NEEDED:**

- Standard Service tools.
- Loctite 243 or eqv.
- Torque wrench 10Nm
- Service laptop.
- RS-232 Service cable *p/n 1100-810-201*.



## PROTECTIVE MEASURES:

### CAUTION!

Printed circuit boards contain electrostatic highly sensitive components requiring particular care in their handling. Ground before making contact and place only on a conductive surface.

### CAUTION!

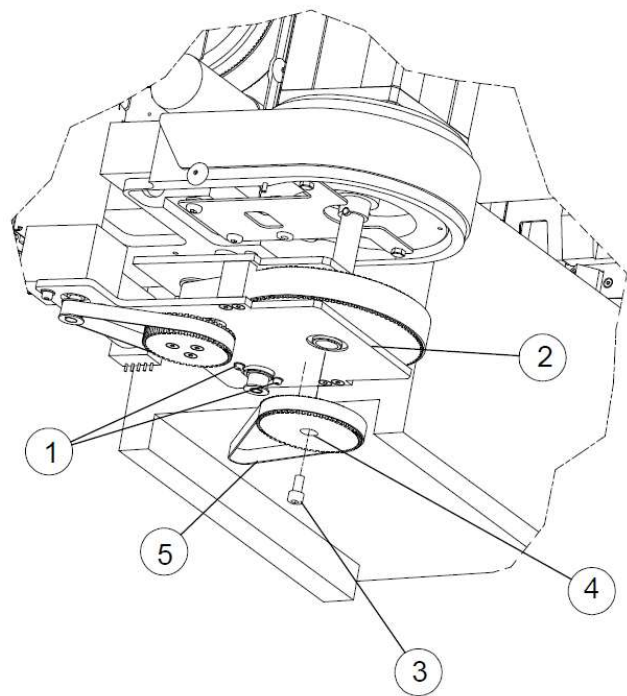
Remaining energy may exist when the equipment is switched off. Always wait at least 15 seconds before working on the system

## ACTION STEPS:

1. If possible, place the system in a good working position.
2. Turn the system OFF from the generator mini console.



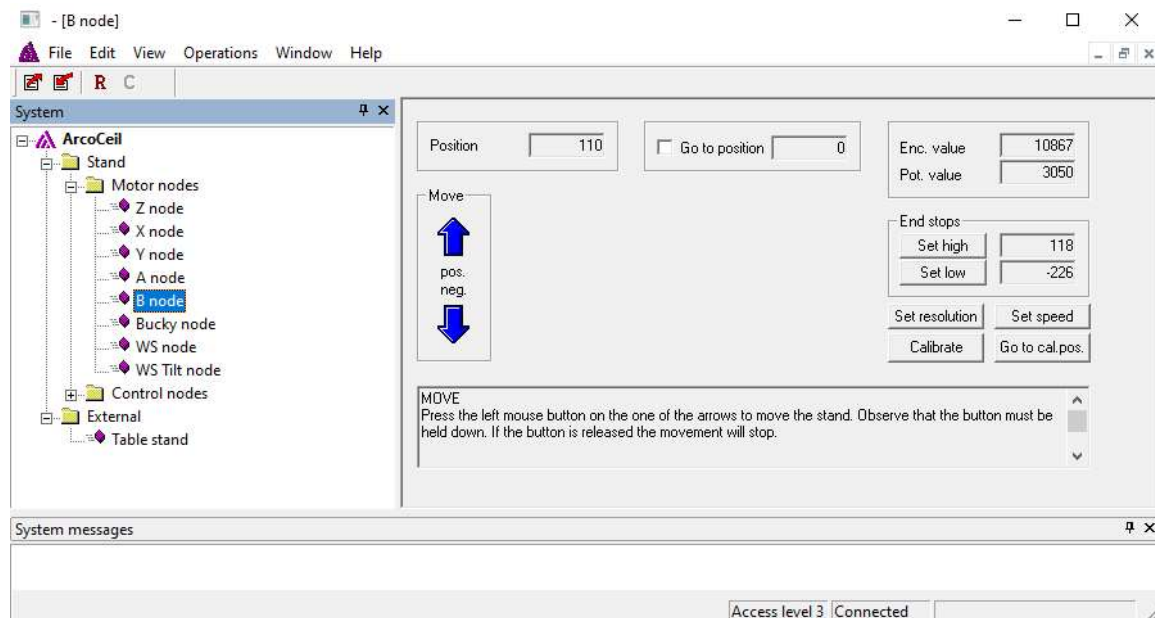
3. Remove covers and disconnect cables connected to the beta motor unit.
4. Release screws (1) holding the potentiometer and release tension of the belt.
5. **NOTE!** Support the beta motor unit to prevent it from falling.
6. Release and remove screw (3), pulley (4) and belt (5).
7. Remove the beta motor unit (2) by sliding it downwards.



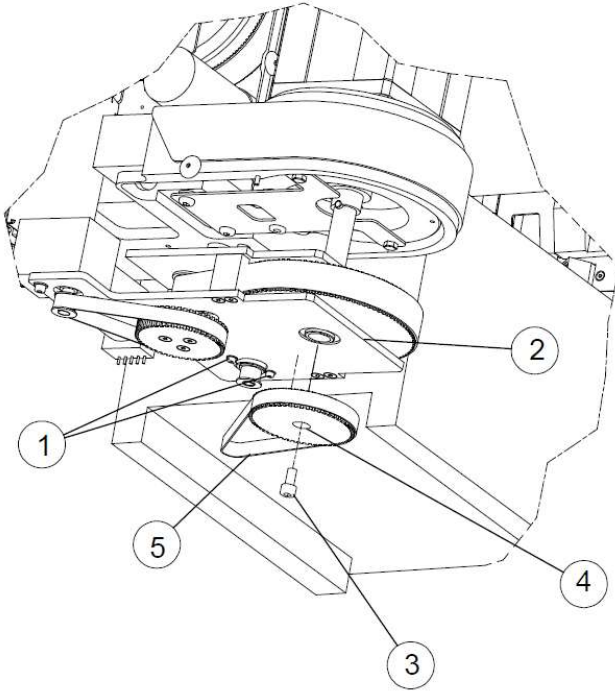
8. Reinstall the beta motor unit on the OTC. Do not install the potentiometer belt yet.
9. Turn the system ON from the generator mini console.



10. Turn the Beta axis to the position of the mechanical end stop in positive direction.
11. Connect the Arco-Ceil service program and enter the Beta node menu. Turn the potentiometer until the Pot. value reaches 3050 (+/-20). During this step, error messages like for example Transducer Diff Error may appear, just proceed to set the potentiometer value as instructed above.



12. Position the potentiometer belt between the potentiometer and pulley. Push the potentiometer firmly away from the pulley to create belt tension. Tighten the two screws (1).
13. Tighten screw (3) in the picture below with 10Nm. Use Loctite 243.



14. Follow the procedure in the Installation & Service manual to Calibrate the Beta axis.

**END OF DOCUMENT**